

## overlook

an integrated 1<sup>st</sup> year architecture studio + tech project  
q4 s2 y1 2017 uct ebe soapg jan schabert

- 02 site
- 03 intro
- 04 some selected approaches  
a representative compilation trying to capture some of the wide scope of 87 great contributions  
unfortunately not all concepts could be included in this li'l documentation



### into & out of the ground

- 04 chinenye chukwuka
- 06 gemma dobrin
- 08 nchima kamwendo
- 10 louis maarsingh

### stereotomy & tectonic

- 12 simon muller
- 14 tilanie oettle
- 16 mxolisi sibusiso moyo

### collective objects & systems

- 18 naa-ilah brown
- 20 brigitte maas
- 22 ben defty

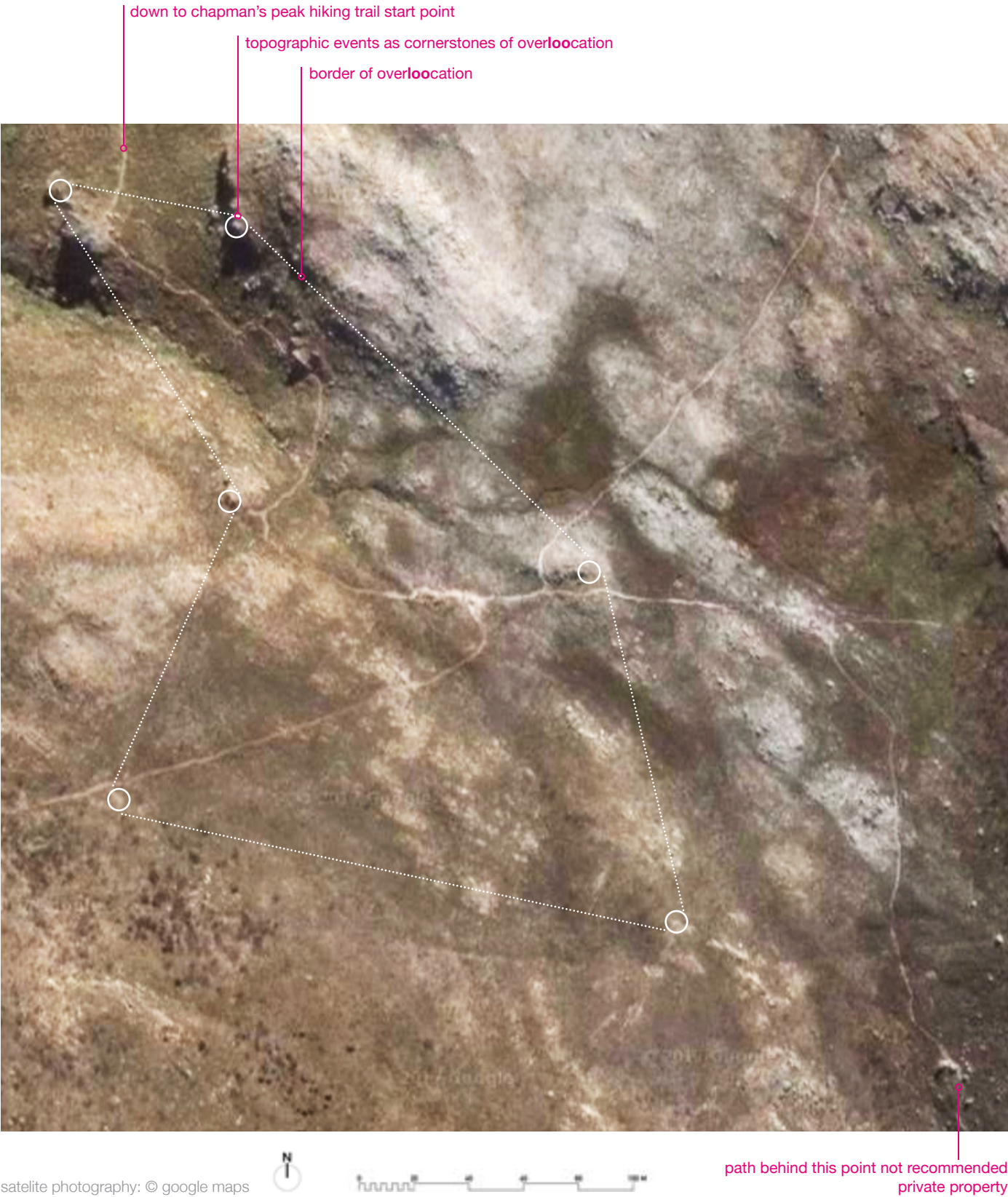
### geomorphology & topology

- 24 poloko leteka
- 26 micha stiller
- 28 dylan tejada

### privacy & metabolism

- 30 sofia briel

site





## constructing space

largely neglected, *maudit*, home of acquired disgust, stigmatized ol-factoric rollercoaster, bluebottles, dim agony, accoustic embarassments, filth, slippery at times. let's go for that: let's unbigottedly construct **overloo** ks, spaces to let some three of our musculii sphincterii dignifiedly relax in an environment of splendid constructive detail and elaborate requirement-profile-responsive materiality.



## location

chapman's nek, wc/za



brief development, scribble, js; chapman's peak & nek from overhead hout bay, from overhead long beach/kommetje; photos: js

## requirements

two toilets one sink  
life span: 10 a

## the river

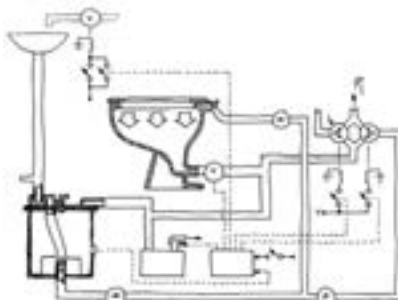
*they shit in a river, dump battery acid in a stream, they watch dead rats wash up on the beach, and complain if they can't swim ...*  
»last great american whale«  
lou reed, 1989

## hands

*have you noticed that there are two kinds of men? those who have a clean cock, and wash their hands before pissing so as not to dirty it, and those who have a dirty cock, which they touch while pissing and get their hands dirty, which they wash afterwards. ...*  
»détective«, jean-luc godard, 1985

## research/context

**excrement** urine/faeces/separation strategies/systems: clean/evac/position/wet/dry c/e/sitting/semisq./squatting **stats** world/safrica **dimensions** za building



regulations m/f/d/neufert m/f/d/cent-livres m/f/d/universal design **case studies** a350-800/1000 eco/latrinae, ostia/it, 700 bc/toilet, iss, thermo-sphere, 1998, nasa/roskosmos/esa/csa/jaxa/public toilet, public toilet groningen/nl, rem koolhaas, 市原市/日本, 2013, fujimoto sou **products** ceramic/stainless steel toilet



airbus toilet, howard/defty/khaas/bokoda/waggie  
soyuz toilet, maksym kozlenko, cc by-sa 4.0

## didactic approach

**subject** questioning the (ab)use of scarce drinking water to turn potent natural fertilizer into sewage. questioning habituated un-ergonomic positions and situations. questioning instilled demands for privacy and unlearned desires for visual control. questioning the permanence of architecture. **content** non-generic building typology/location/requirement-profile to demand for super-specific responsive design-development instead of antetype-klones/derrivates **format** individual design development with teamwork-based analytical foreplay + a site-expedition.

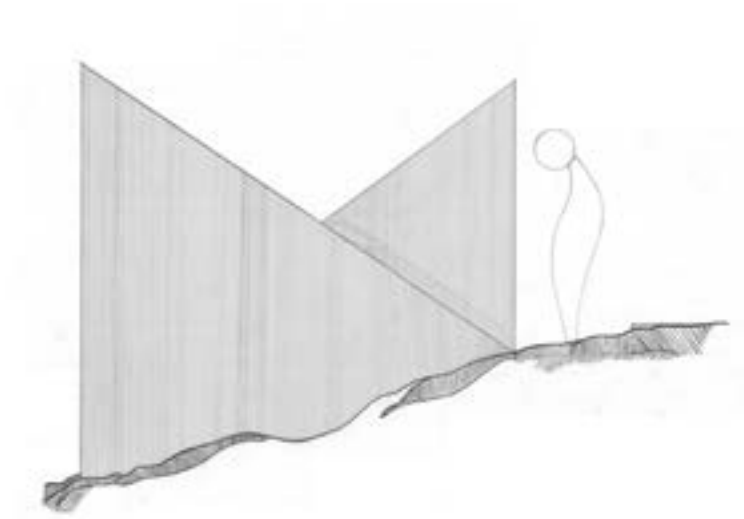


interim pin-up and one\*six healthcheck  
rapid-fire peer on peer reports. guest talks. full integration with technology course.

## concept & context

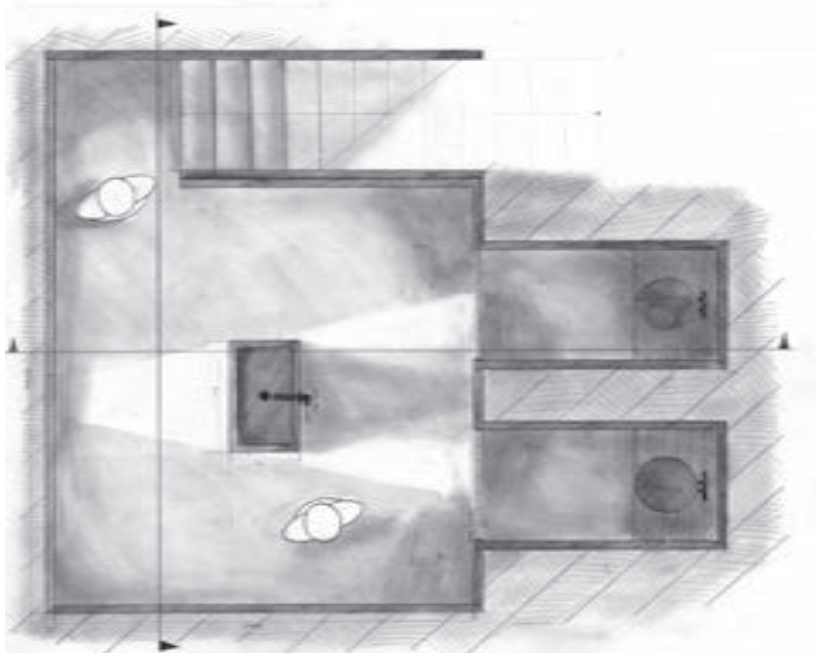
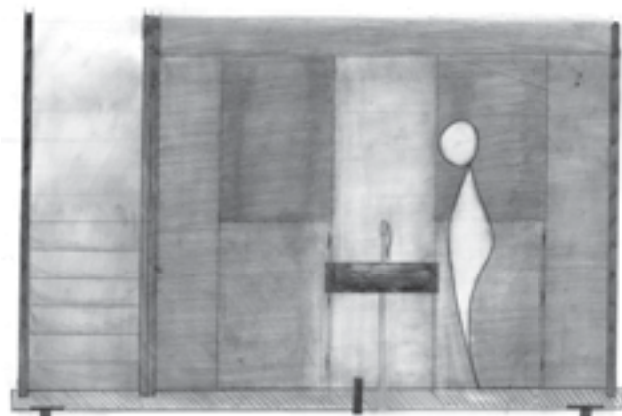
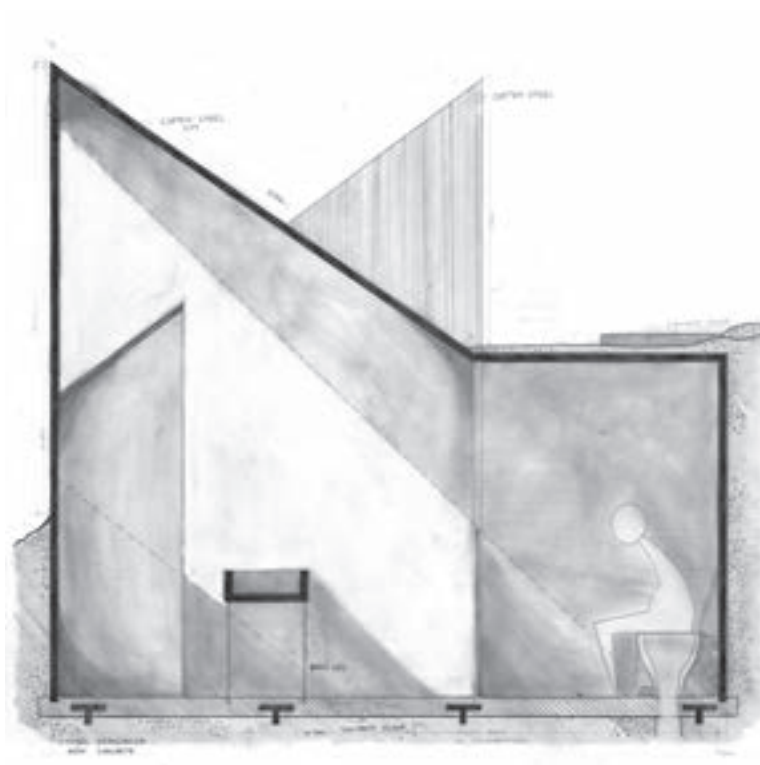
- 01 sow your ideas out into the field
- 02 immerse yself in that other habitat
- 03 requirementprofiles
- 04 continue unfinished business
- 05 blendin'in
- 06 object/space/inbetween
- 07 the easy way is always mined
- 08 the right way
- 09 materialistic approach
- 10 help, dont act!
- 11 value systems
- 12 open your ears wide
- 13 only here
- 14 enjoy havg not a plan where to go
- 15 using potentials
- 16 topography is your friend
- 17 can you imagin the opposite?
- 18 where is it needed the most?
- 19 identify the right spot
- 20 nongenericness
- 21 i do it out of habit, not addiction
- 22 let it guide you
- 23 dont land

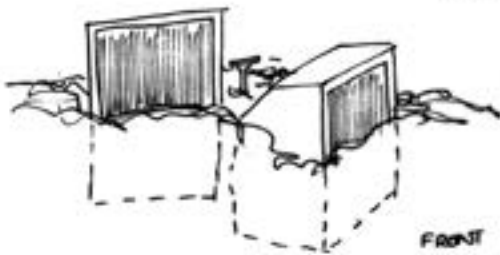
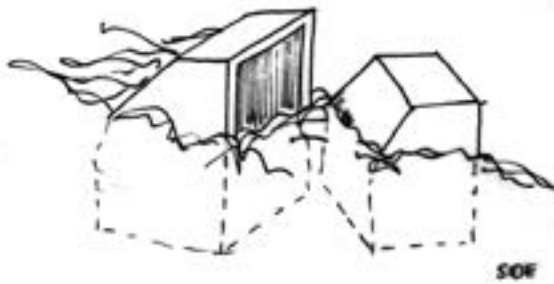
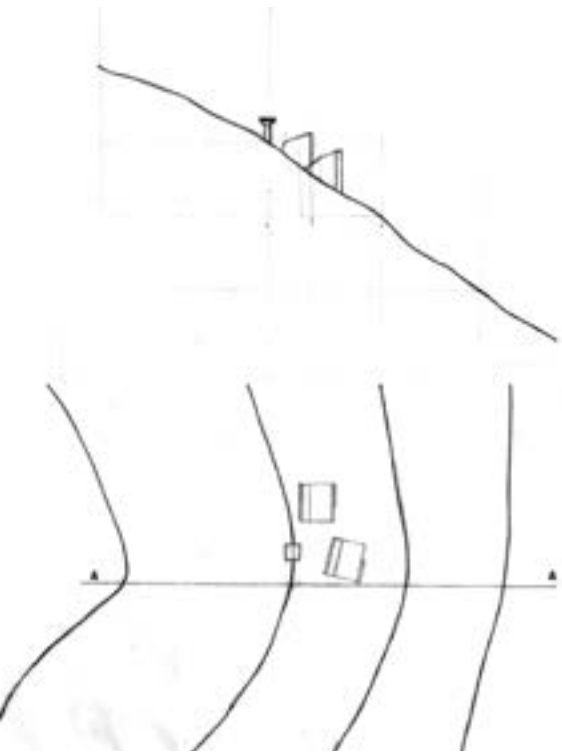
on-site exhibition: ascend to chapman's nek on north-westerly route  
photo: niven stanley



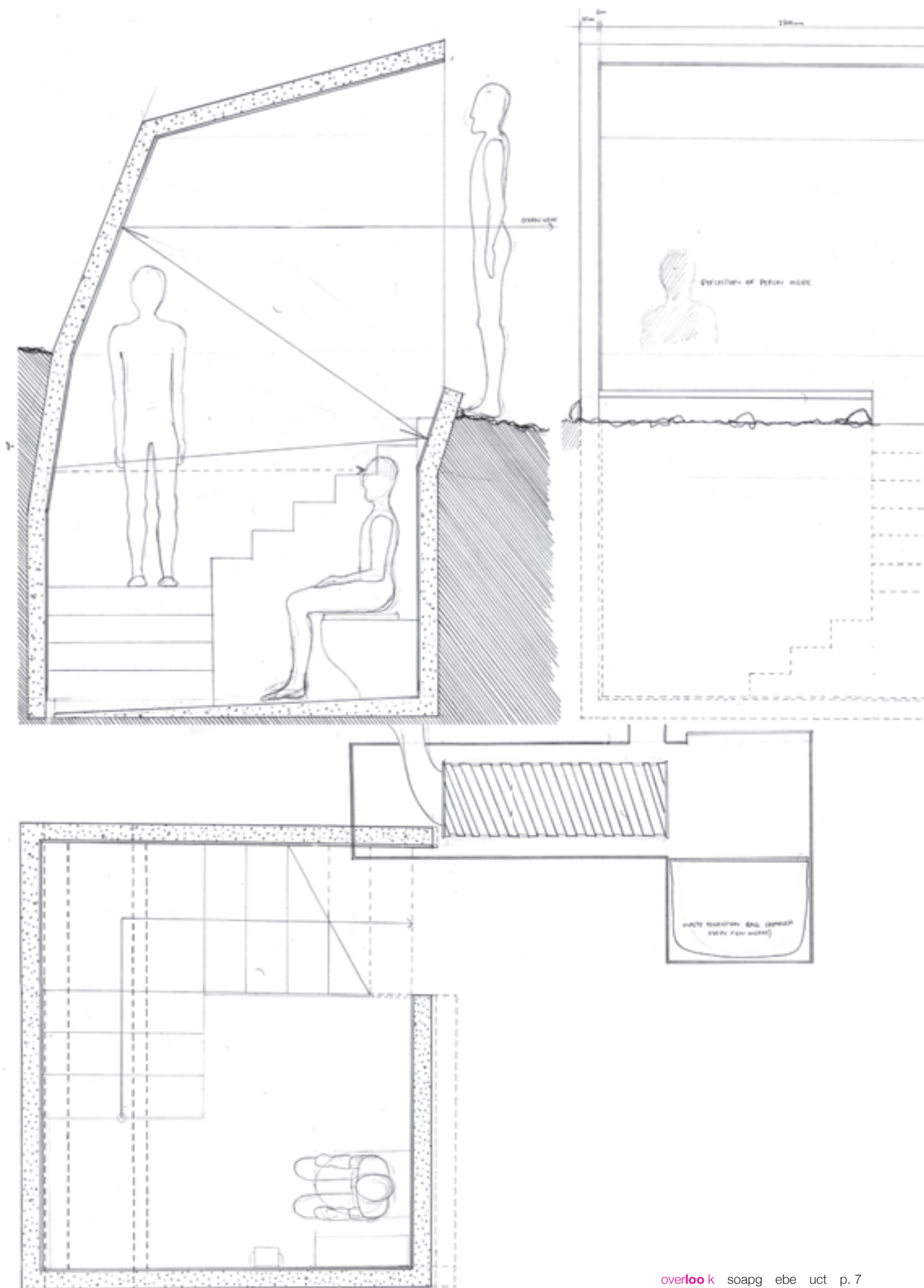
while climbing  
one discovers a shiny object  
in the not too far distance

one gets the urge  
to find out what it is

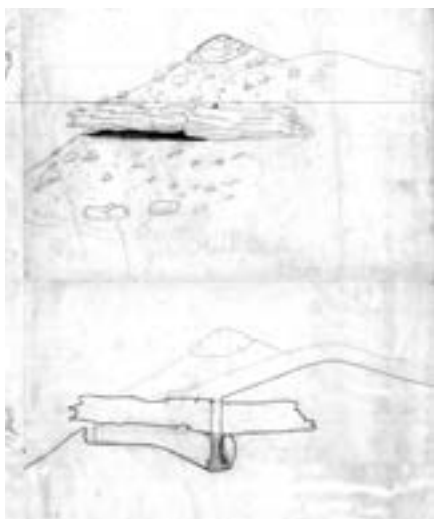




the concept of this public restroom  
is to reflect as much of the beauty  
of the natural surroundings  
on the chapman's neck hike  
in an unexpected and unusual way

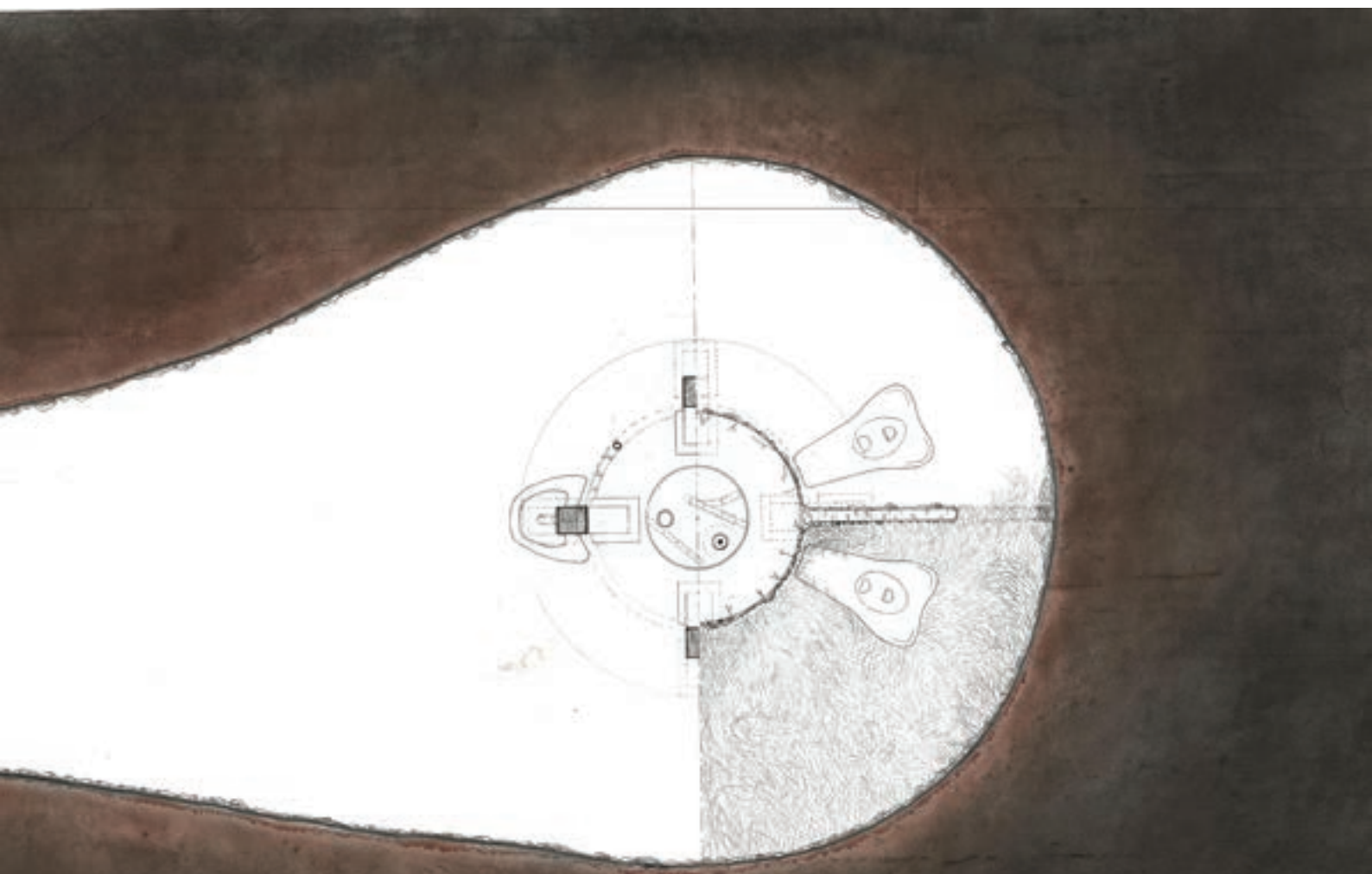
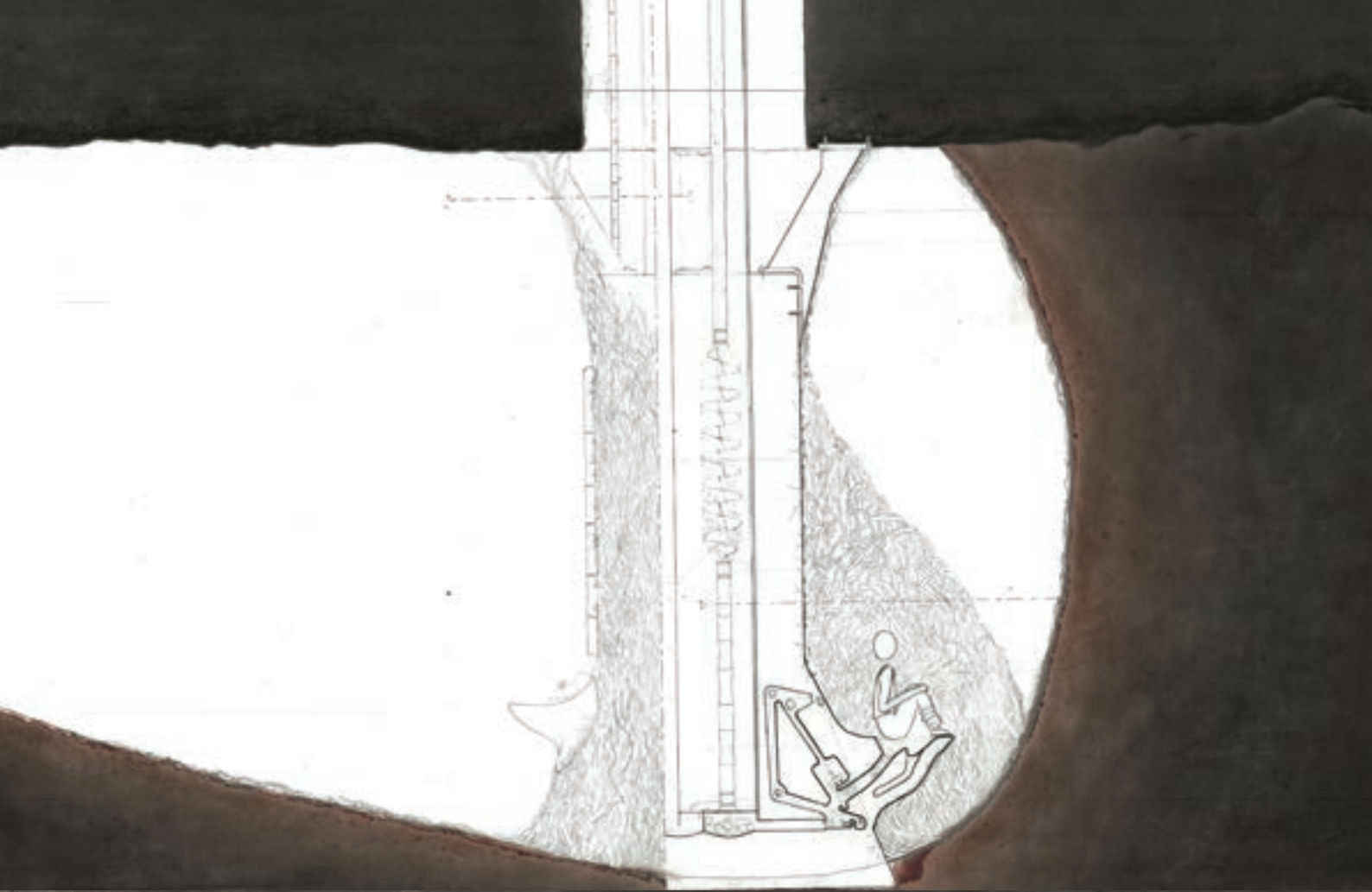


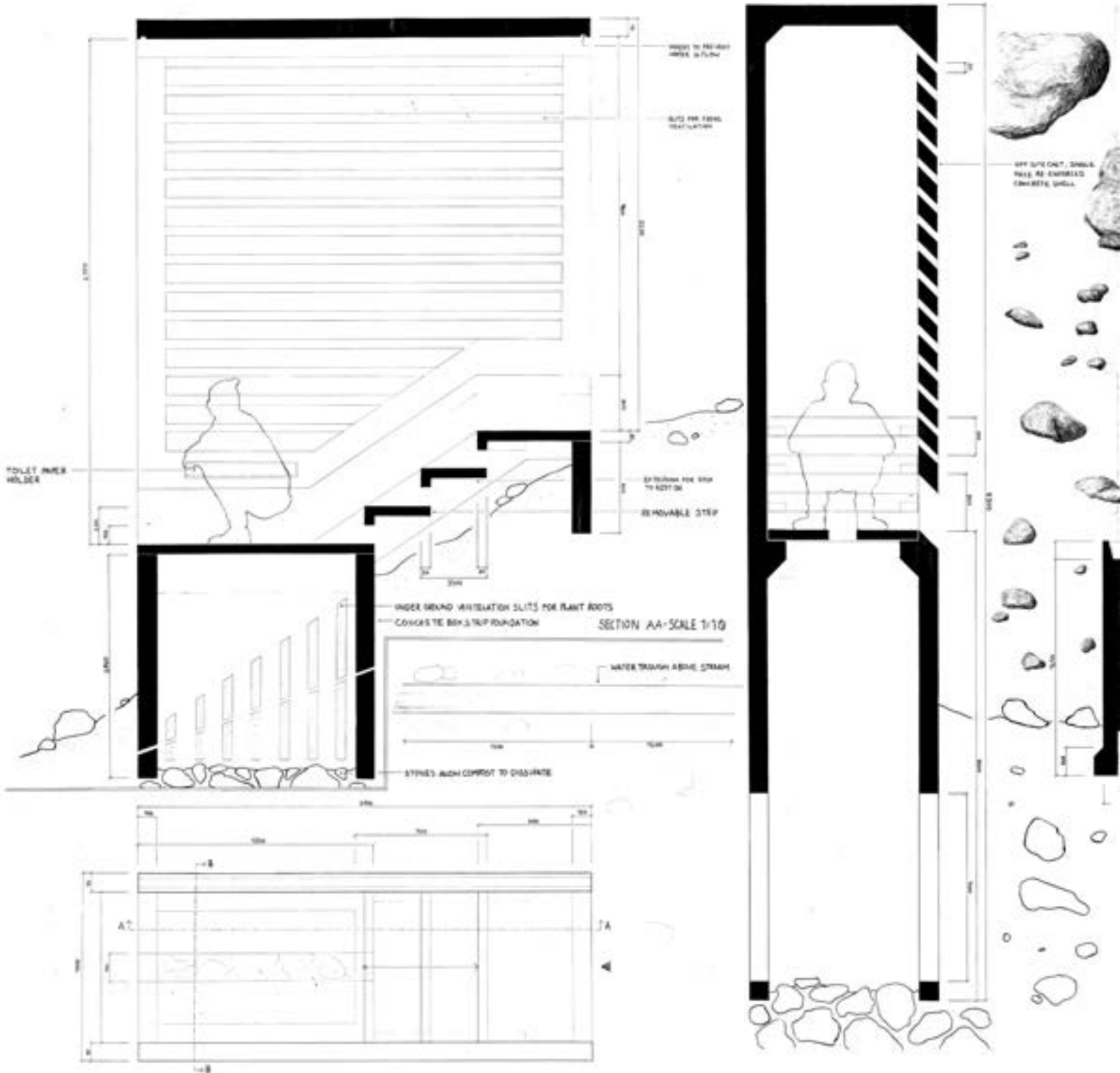


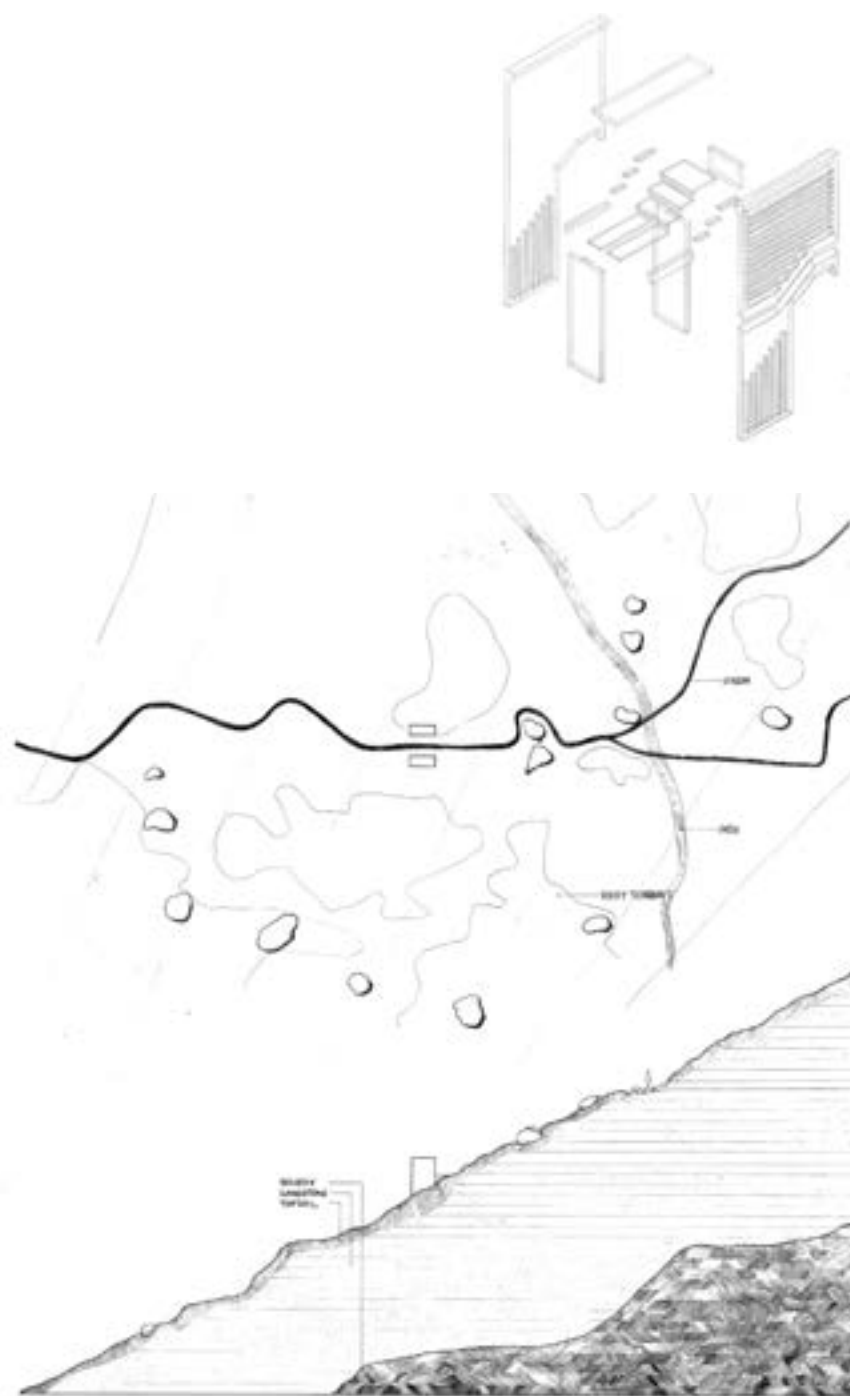


into the ground – out of the ground nchima kamwendo



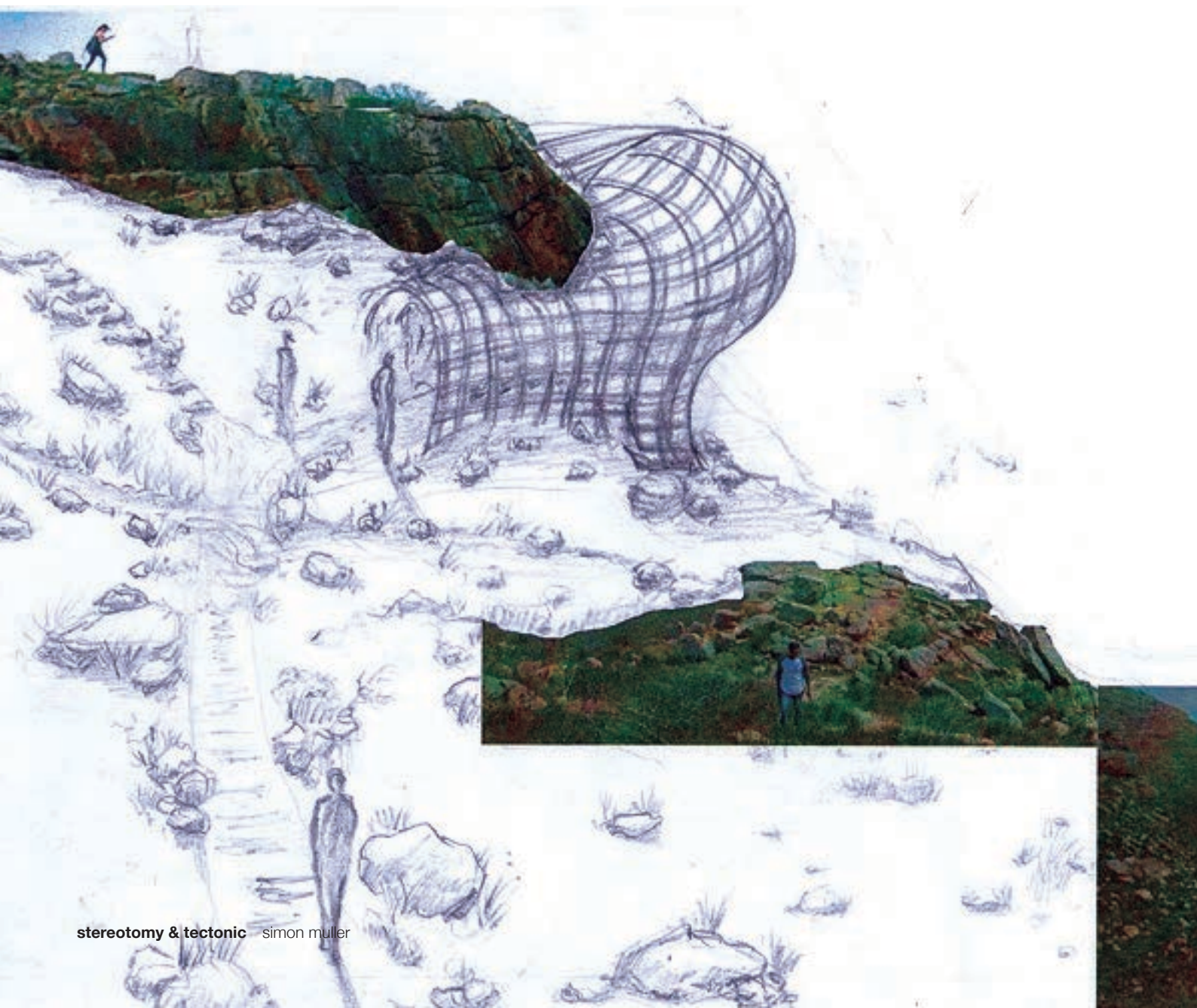
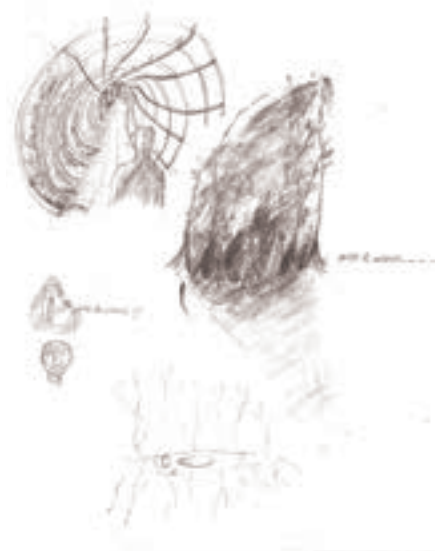




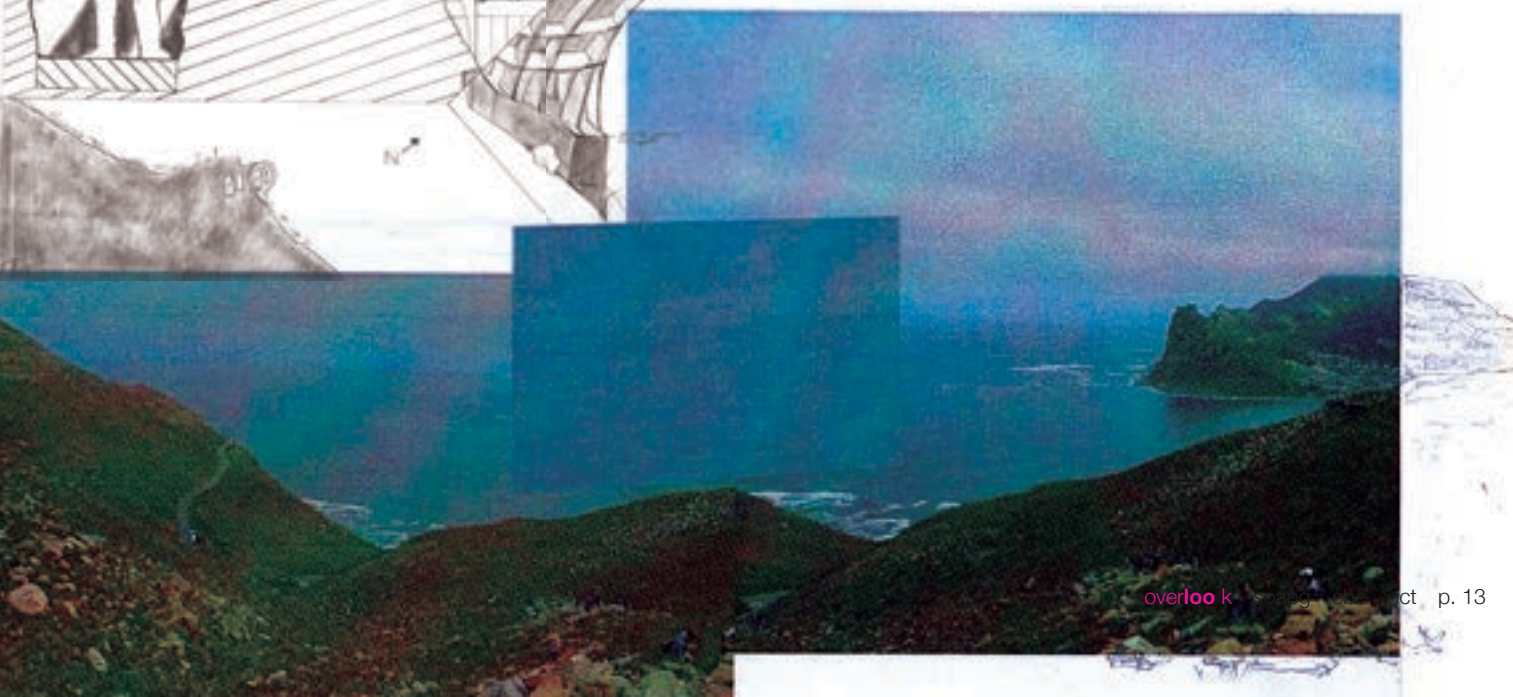
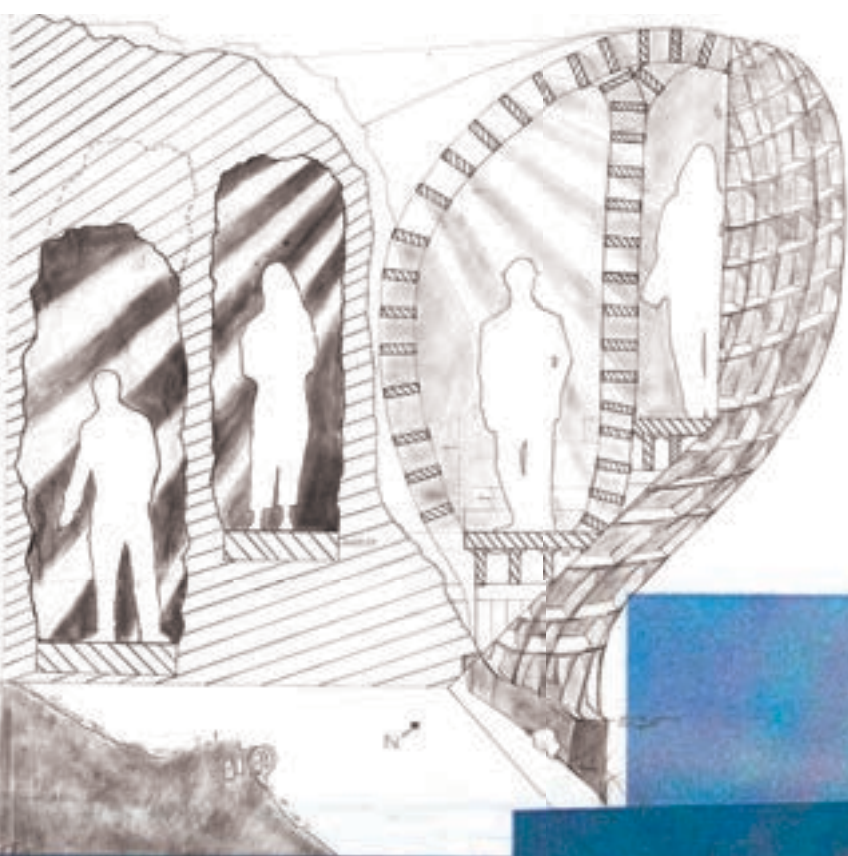
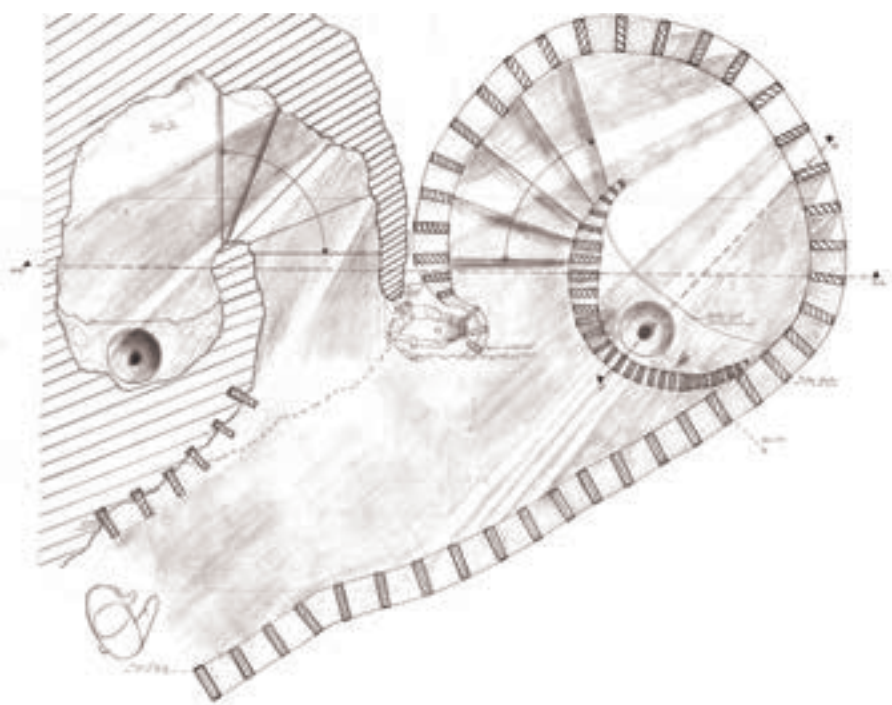


goliath symmetry extruded from earth  
 no apologies  
 dark mass disrupting natural order  
 man leaves mark  
 claiming







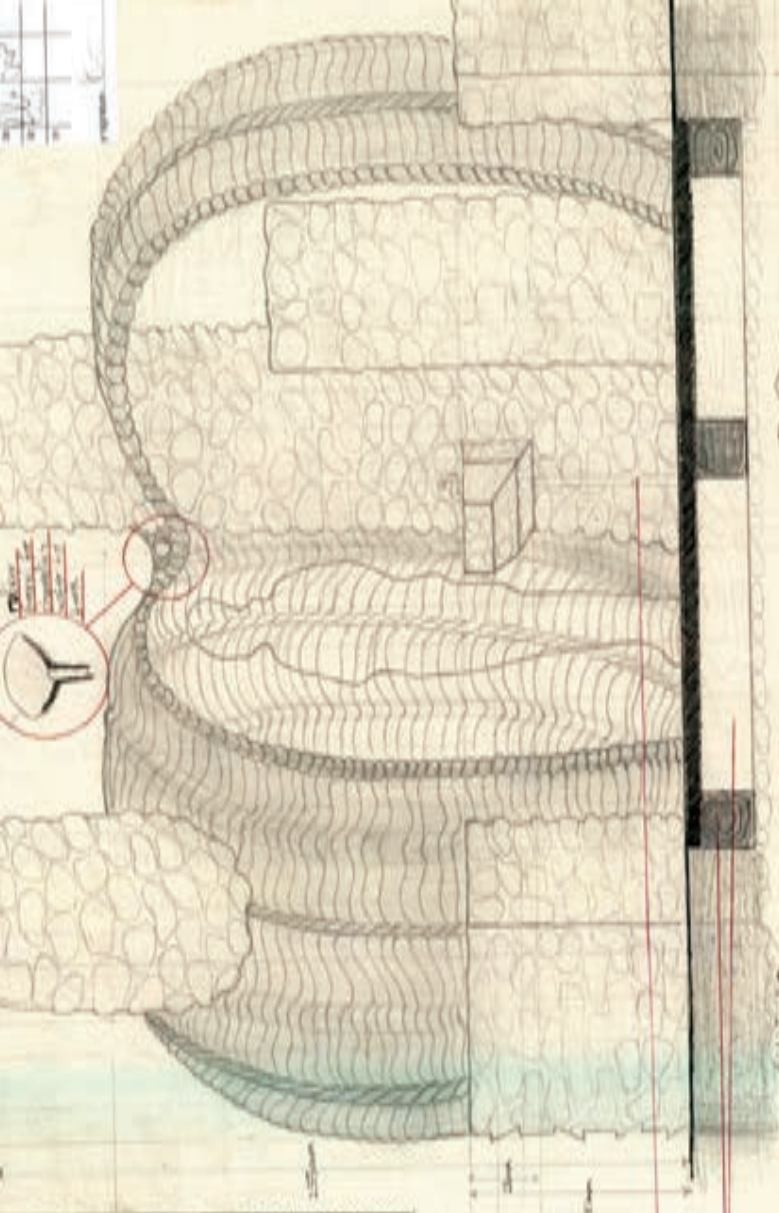










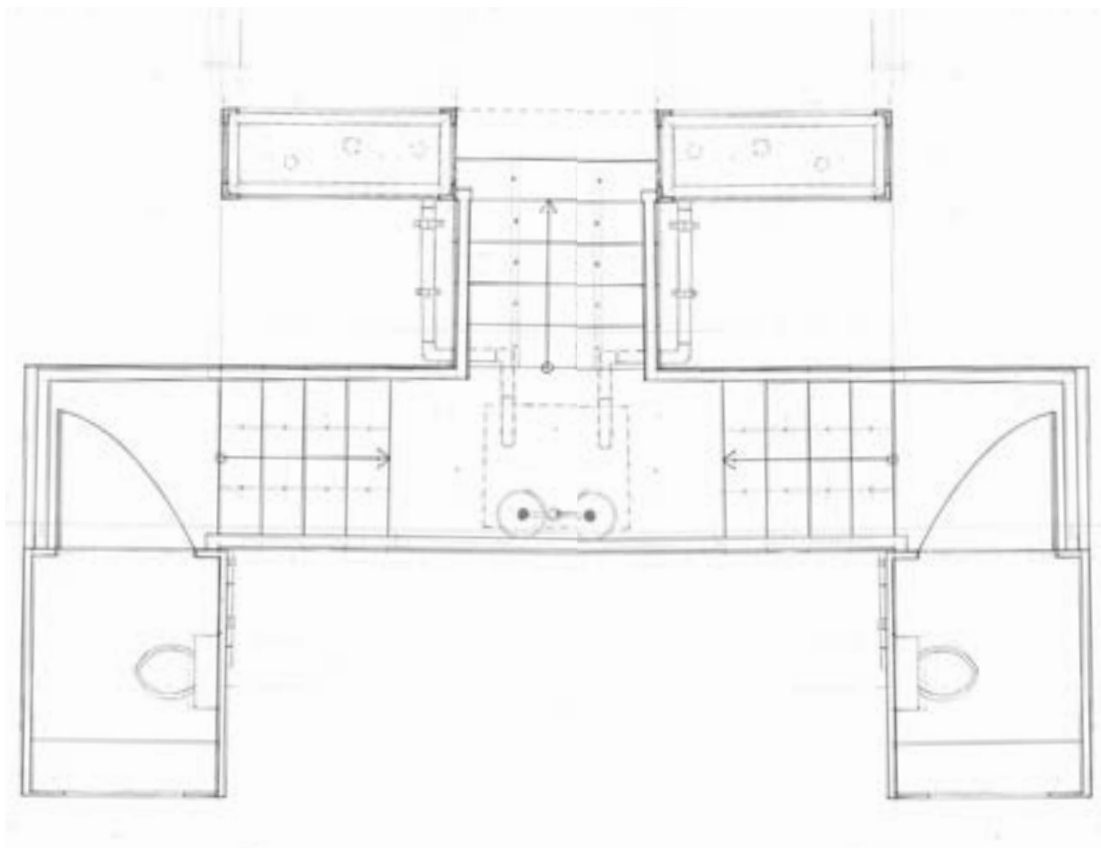
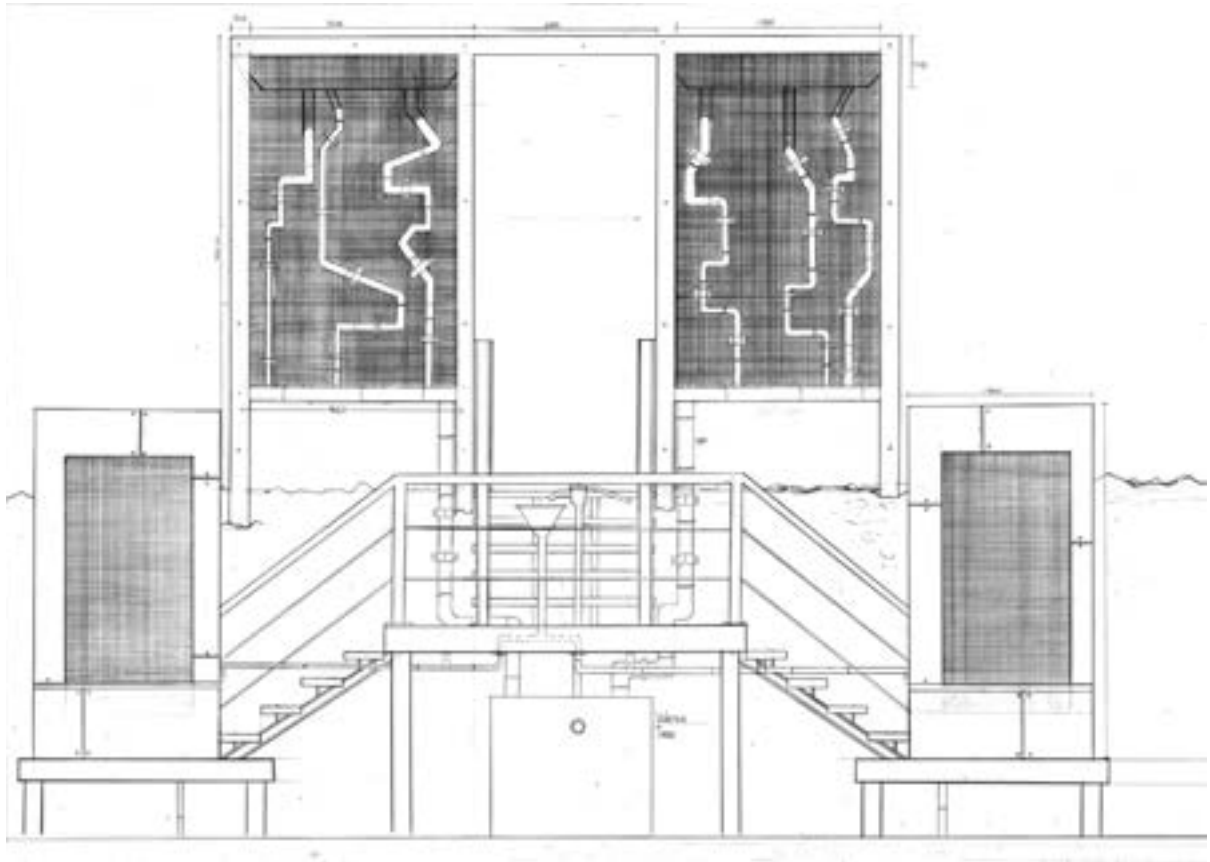


Hand-drawn geological cross-section of a dam and its foundations. The diagram shows a central dam structure with two large circular foundations on either side. The foundations are filled with a pattern of small circles, representing gravel or crushed stone. The dam structure is shown with horizontal layers, indicating different materials or construction stages. A legend in the top right corner identifies the materials: 'Main' (Main body), 'Bases' (Bases), 'Sillings' (Sillings), and 'Details' (Details). A scale bar at the bottom indicates a length of 100 feet. The drawing is dated '1911' and signed 'J. W. B. 1911'.

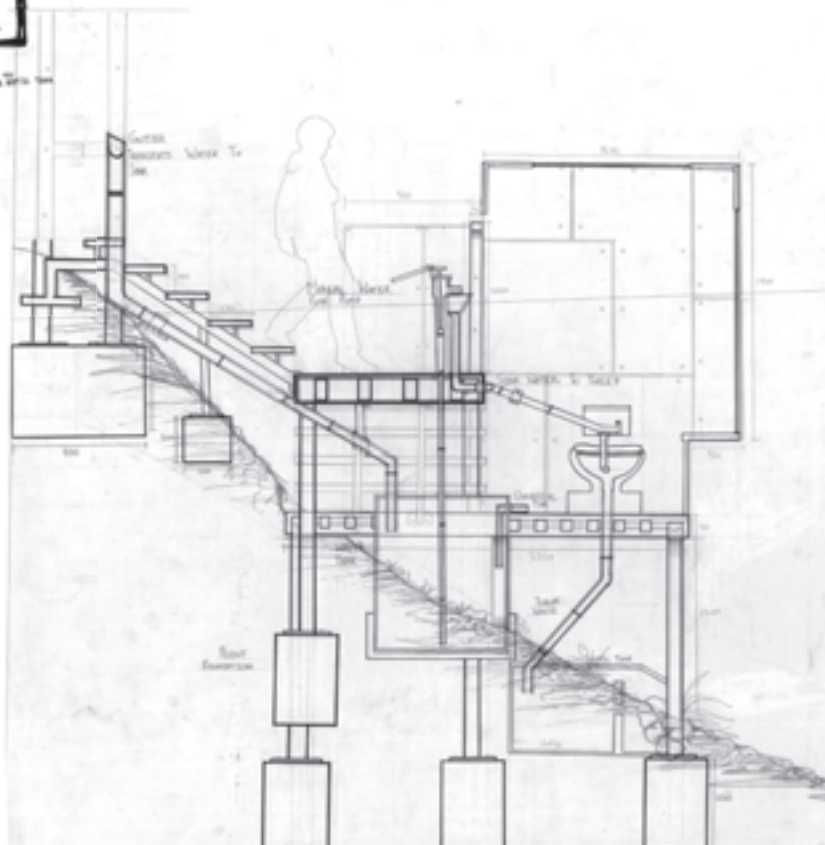
[illegible]

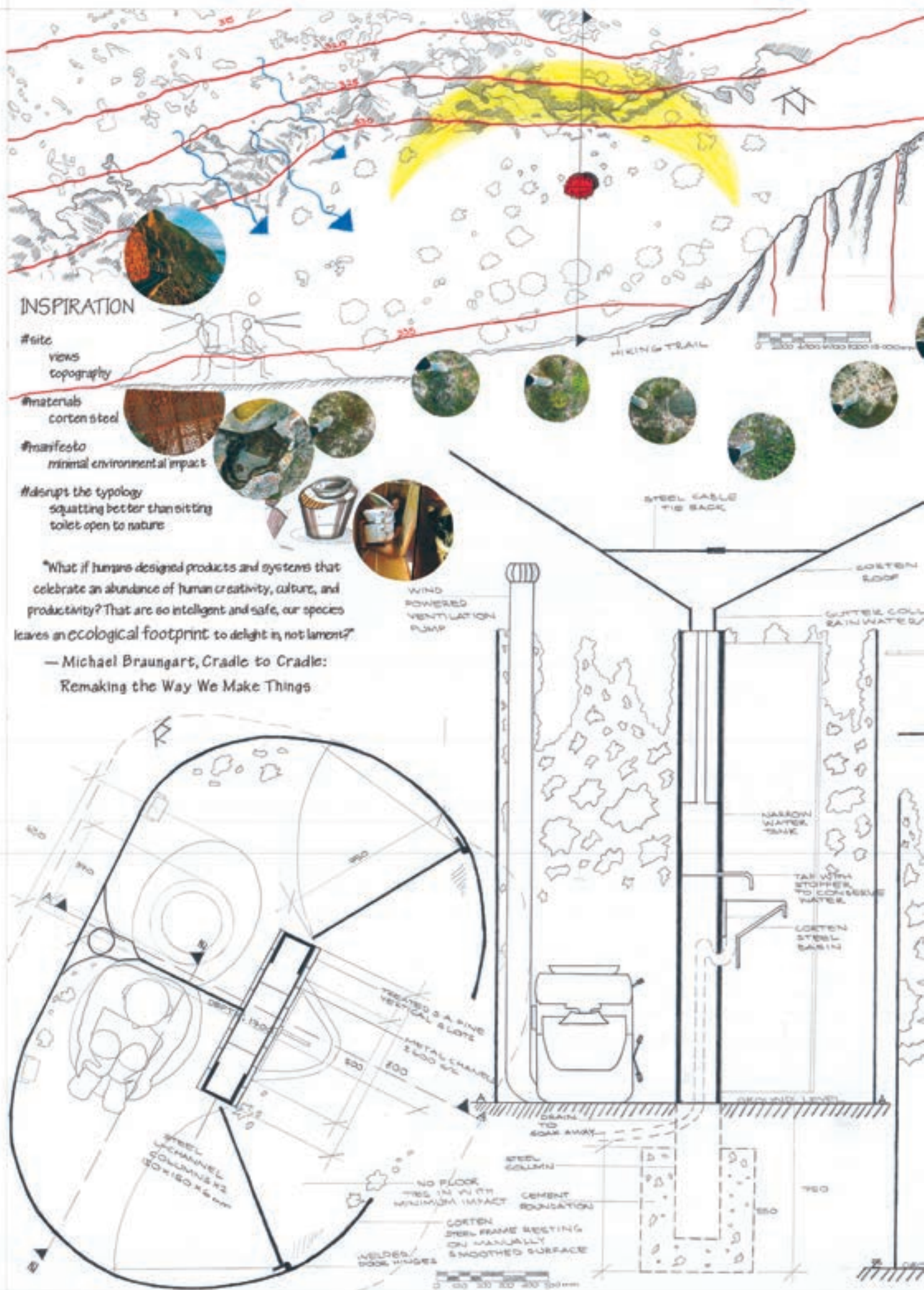


overlo k soapg ebe uct p. 17

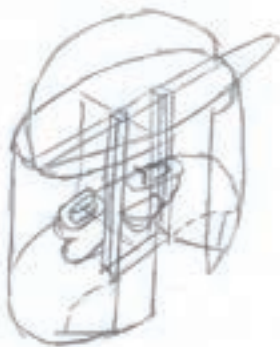
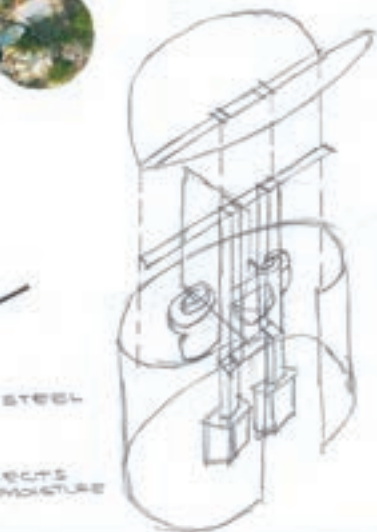








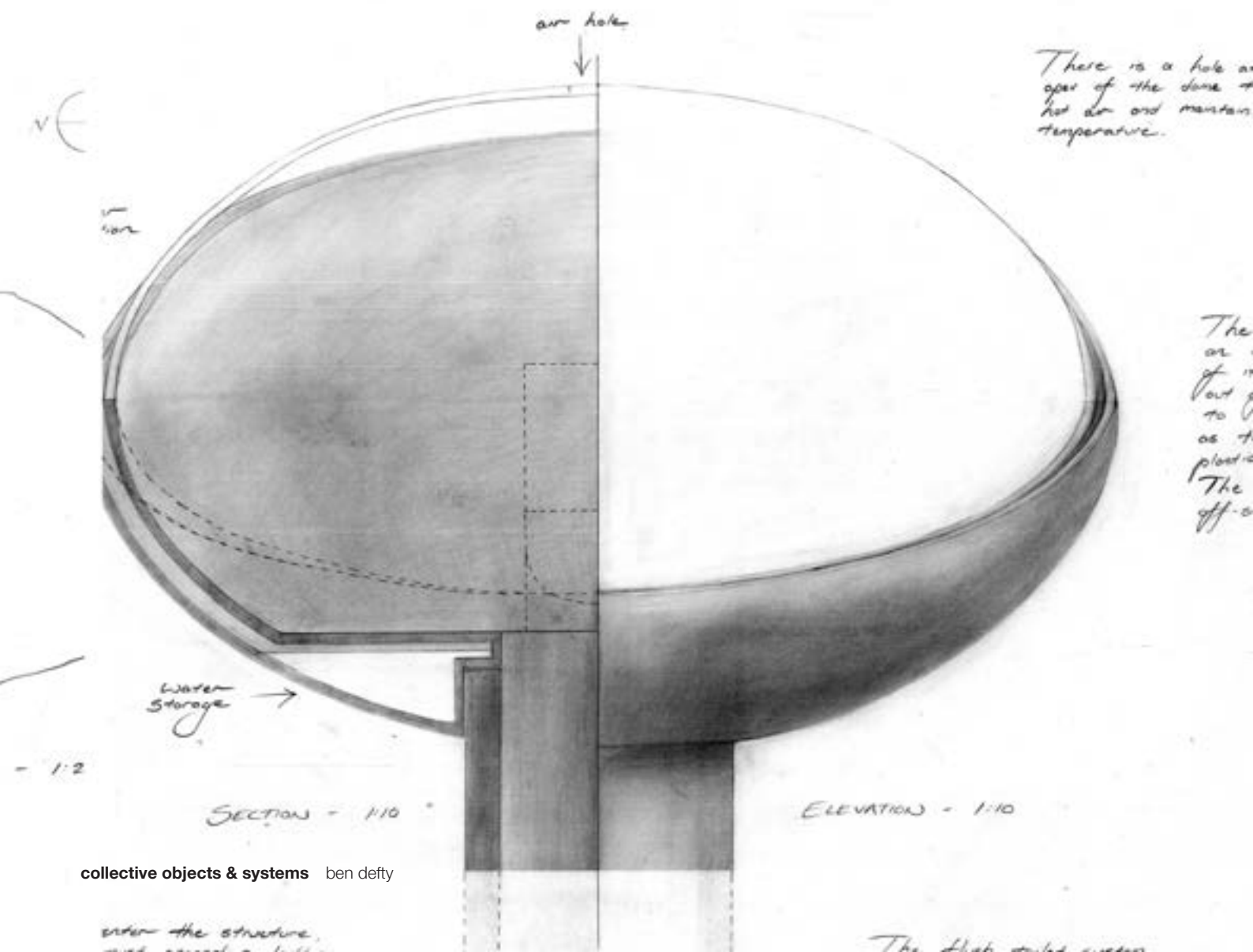




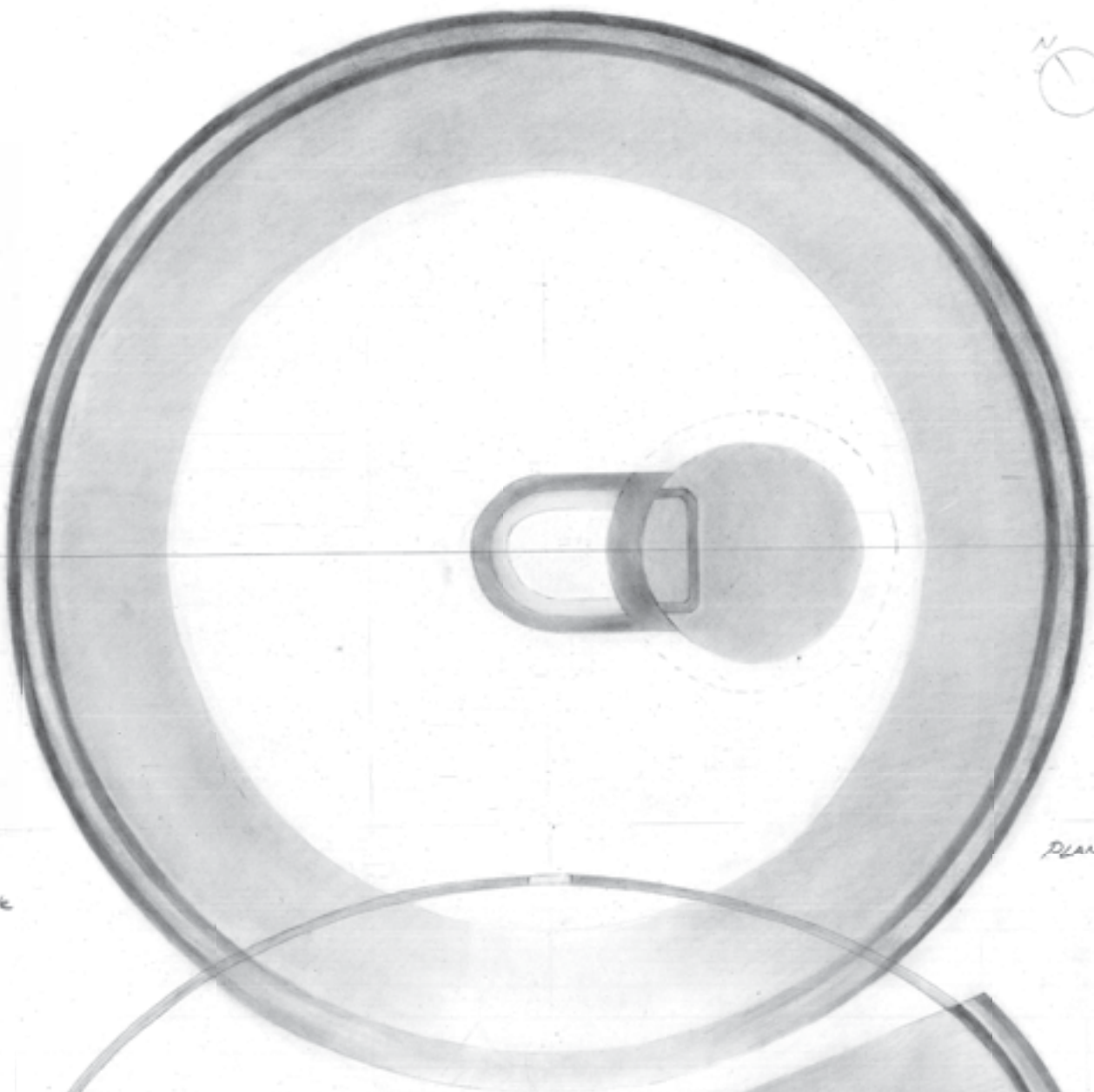
FOOTPRINT	
1200	SITE PLAN + SECTION
180	PLAN, SECTION A + Z, FRONT ELEVATION
115	CONCEPT INSPIRATION
115	EXPLODED AXONOMETRIC
115	MONOGRAPH
BRUNNENMAAS	
2017	
UCT SCHOOL OF ARCHITECTURE, PLANNING + GEOMATICS	
DESIGN + THEORY STUDIO I	
TECHNOLOGY I	



to contrast the sites environment  
using the characteristics of form,  
colour and materiality.  
the design was further influenced by  
chapman's peak weather conditions  
such as wind and rainfall.



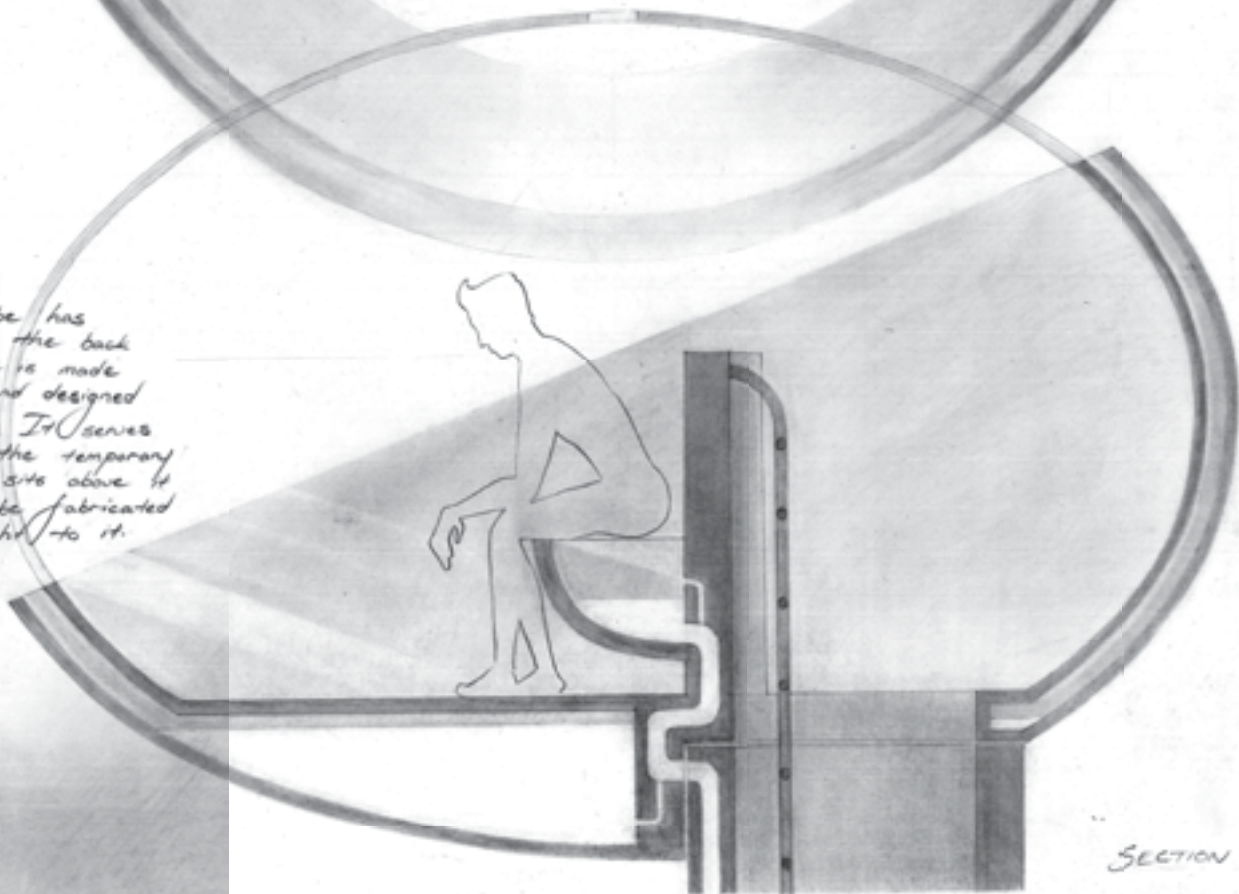




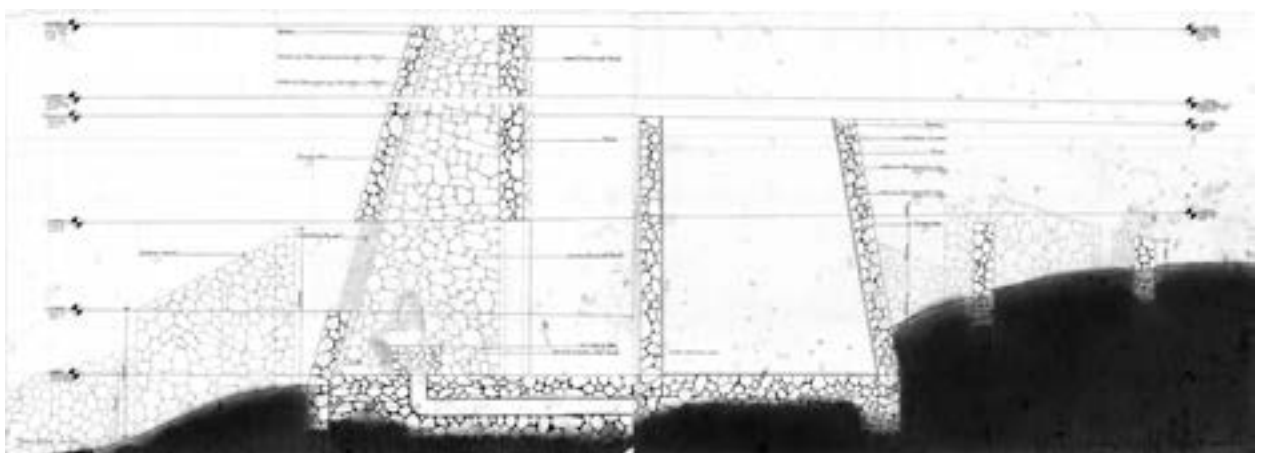
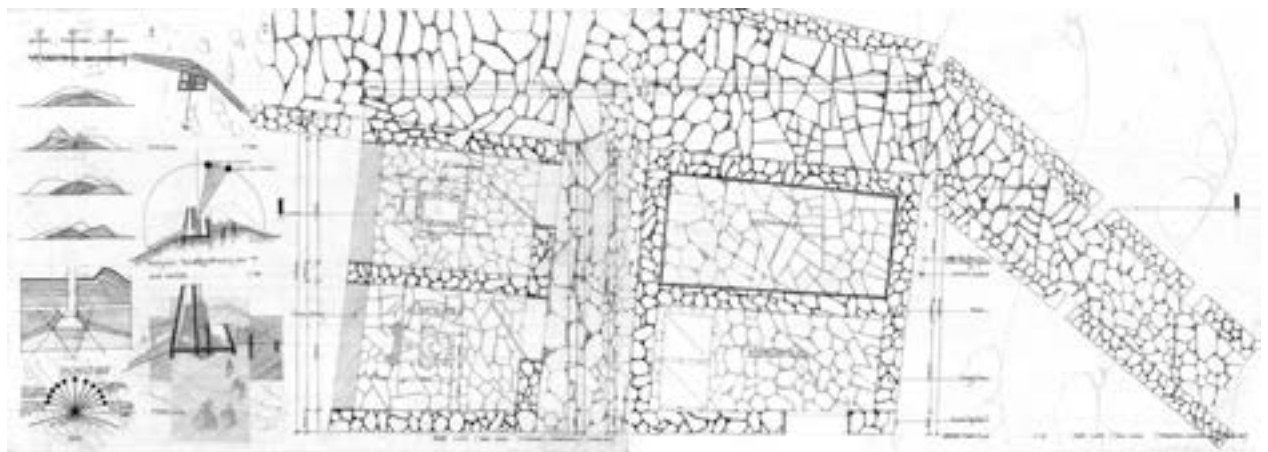
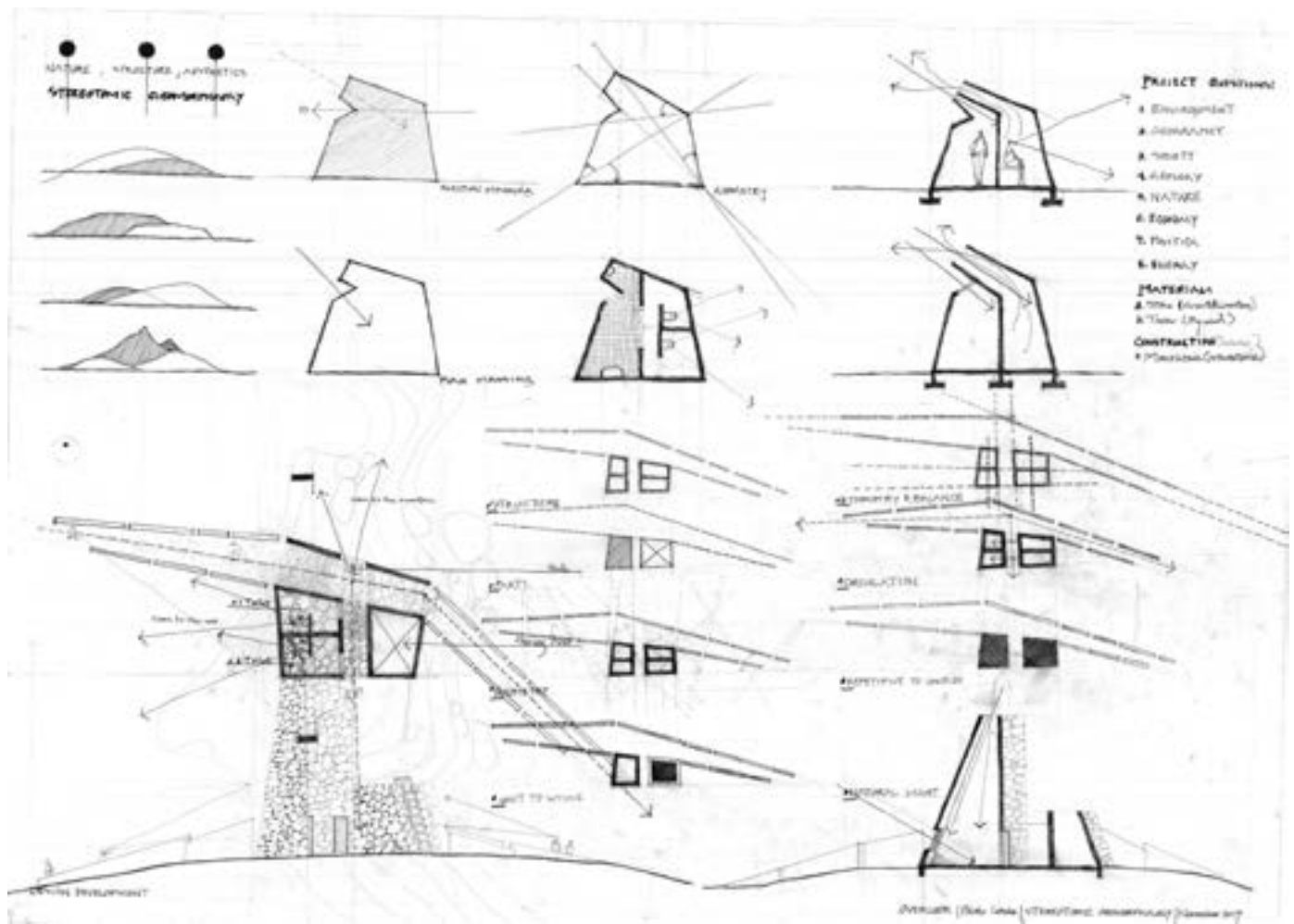
PLAN - 1/10

the  
release  
a comfortable

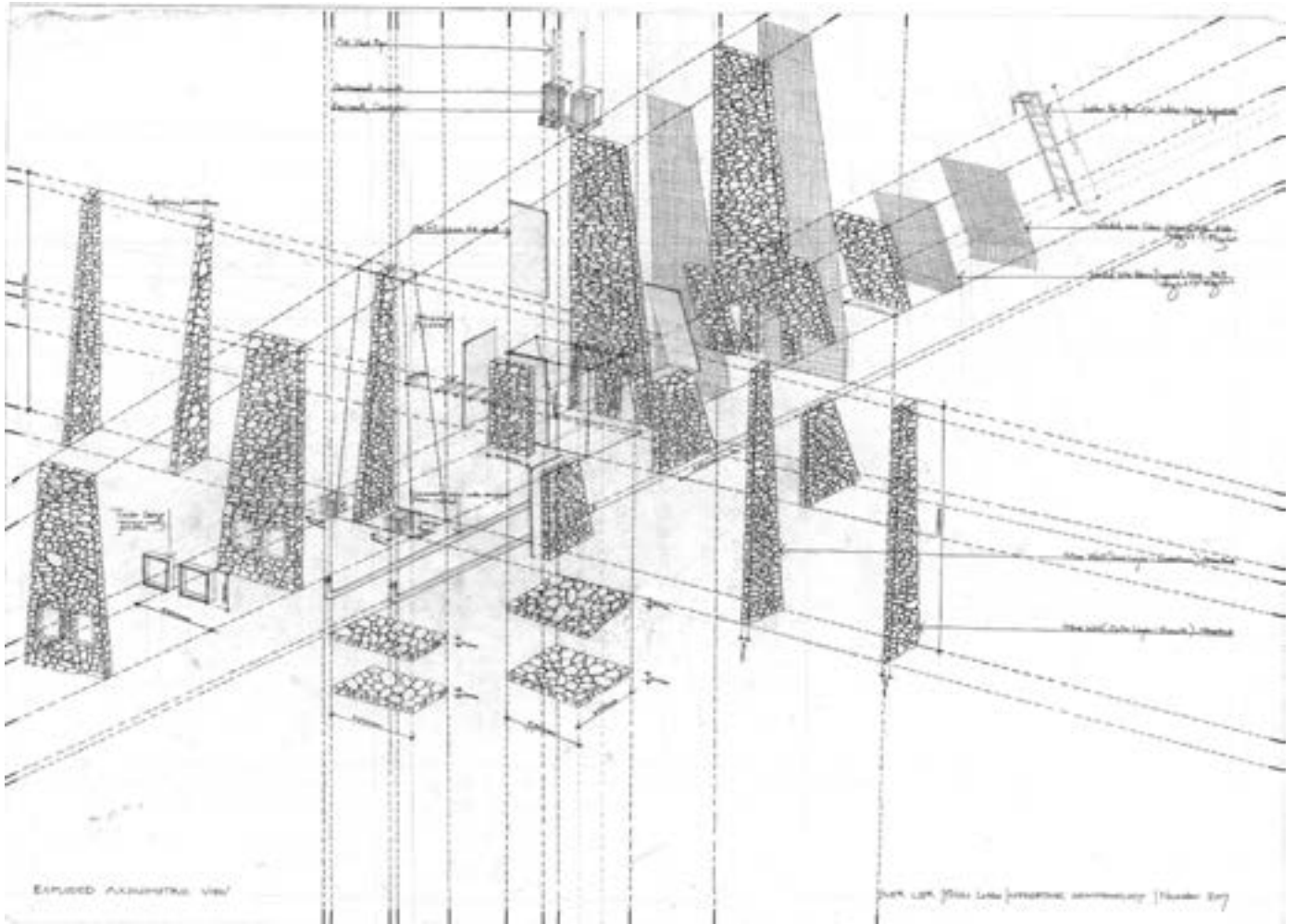
entrance tube has  
opening around the back  
The tube is made  
of concrete, and designed  
to be permanent. It serves  
as the base for the temporary  
one that sits above it  
The temporary one would be fabricated  
in situ, and brought to it.



SECTION A-A - 1/10







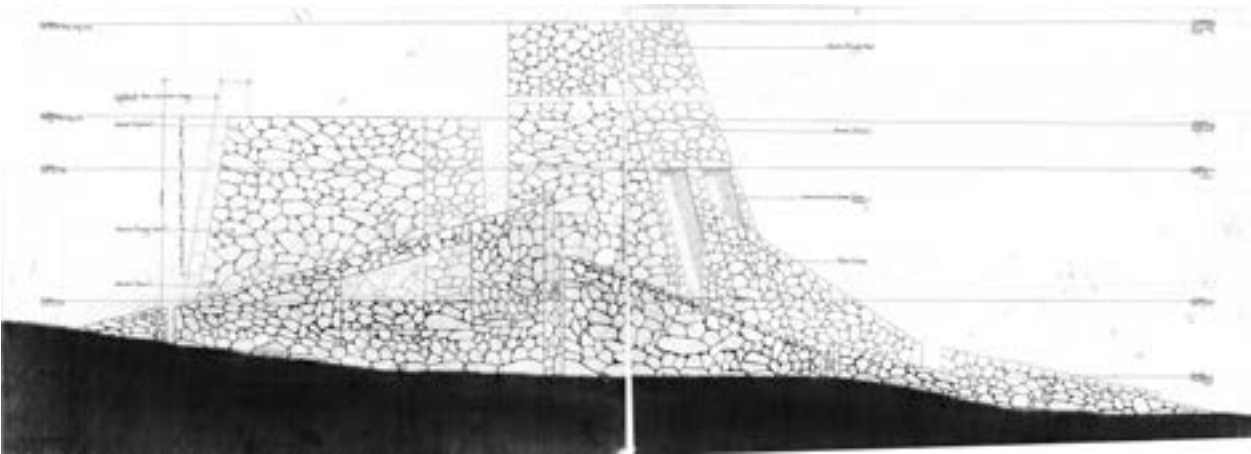
nature, structure, aesthetics  
 stereotomic geomorphology

project questions:

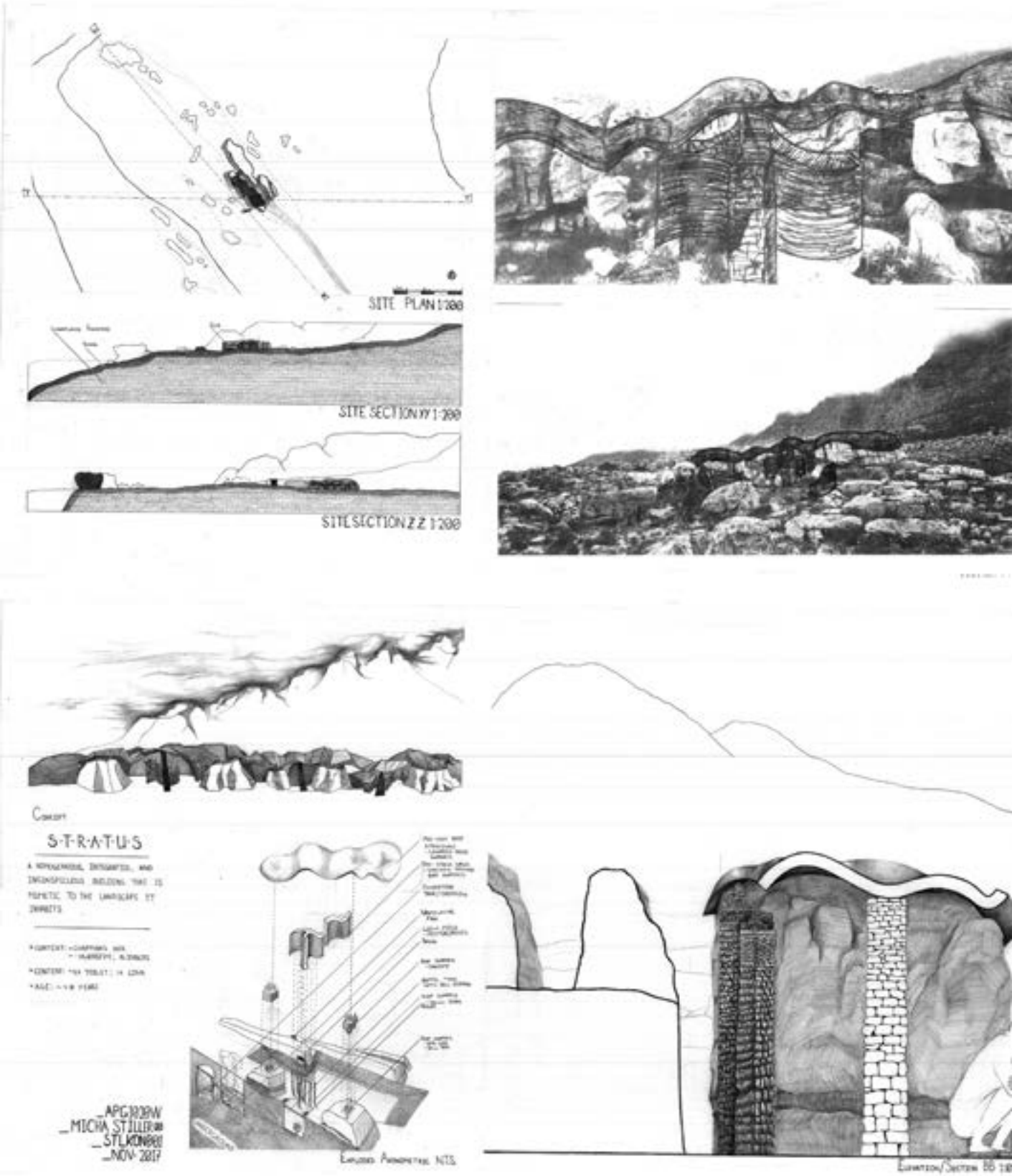
- 1 environment
- 2 geography
- 3 society
- 4 geology
- 5 nature
- 6 economy
- 7 politics
- 8 energy

materials  
 a granite & limestone  
 b timber

construction technology  
 monolithic stereotomic

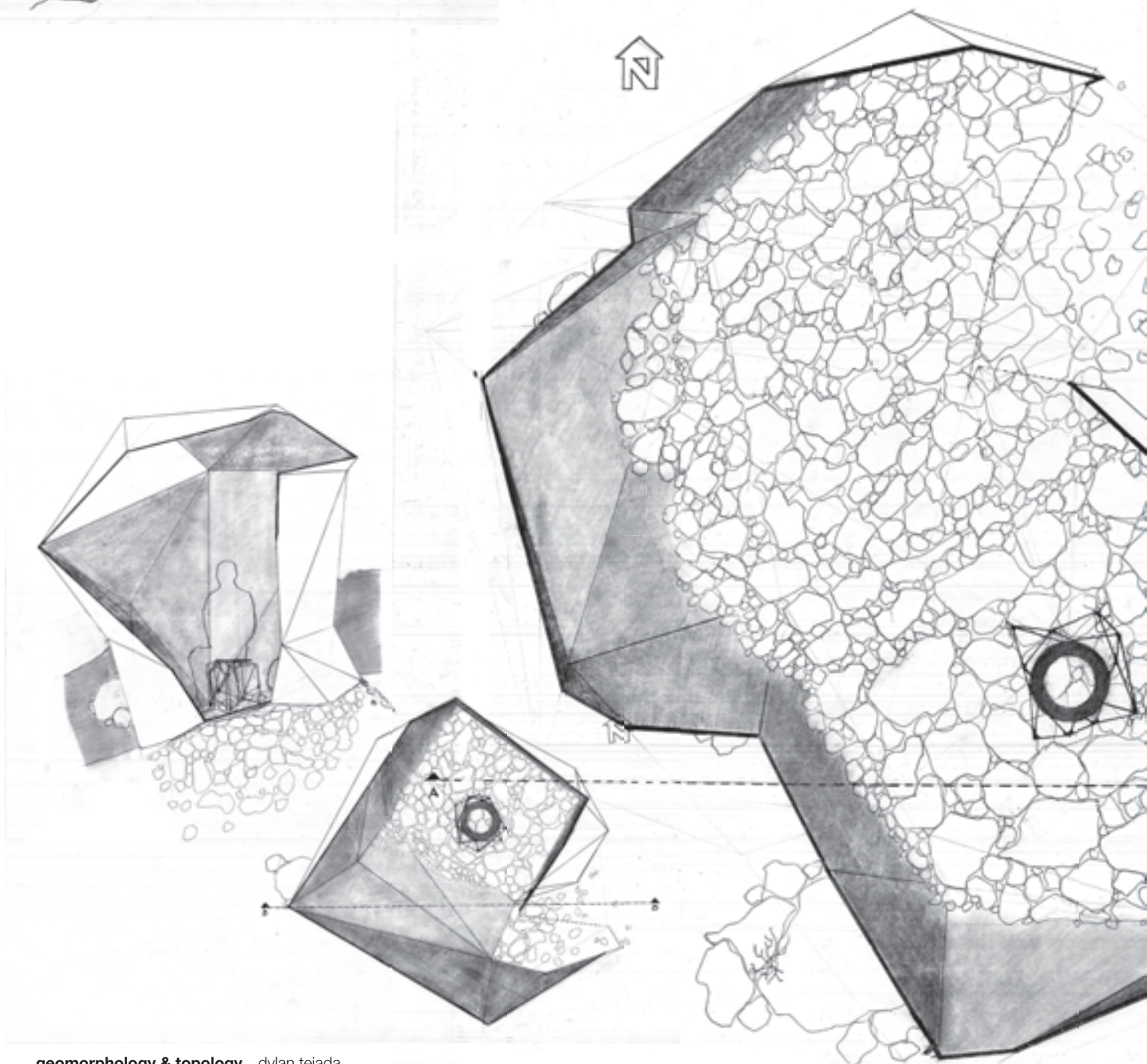
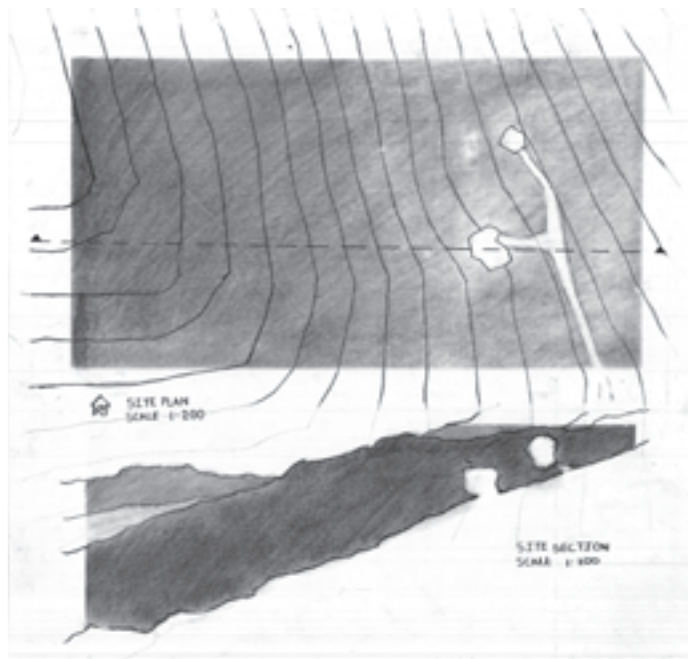


a homogeneous integrated,  
and inconspicuous building  
that is mimetic to the landscape  
it inhabits

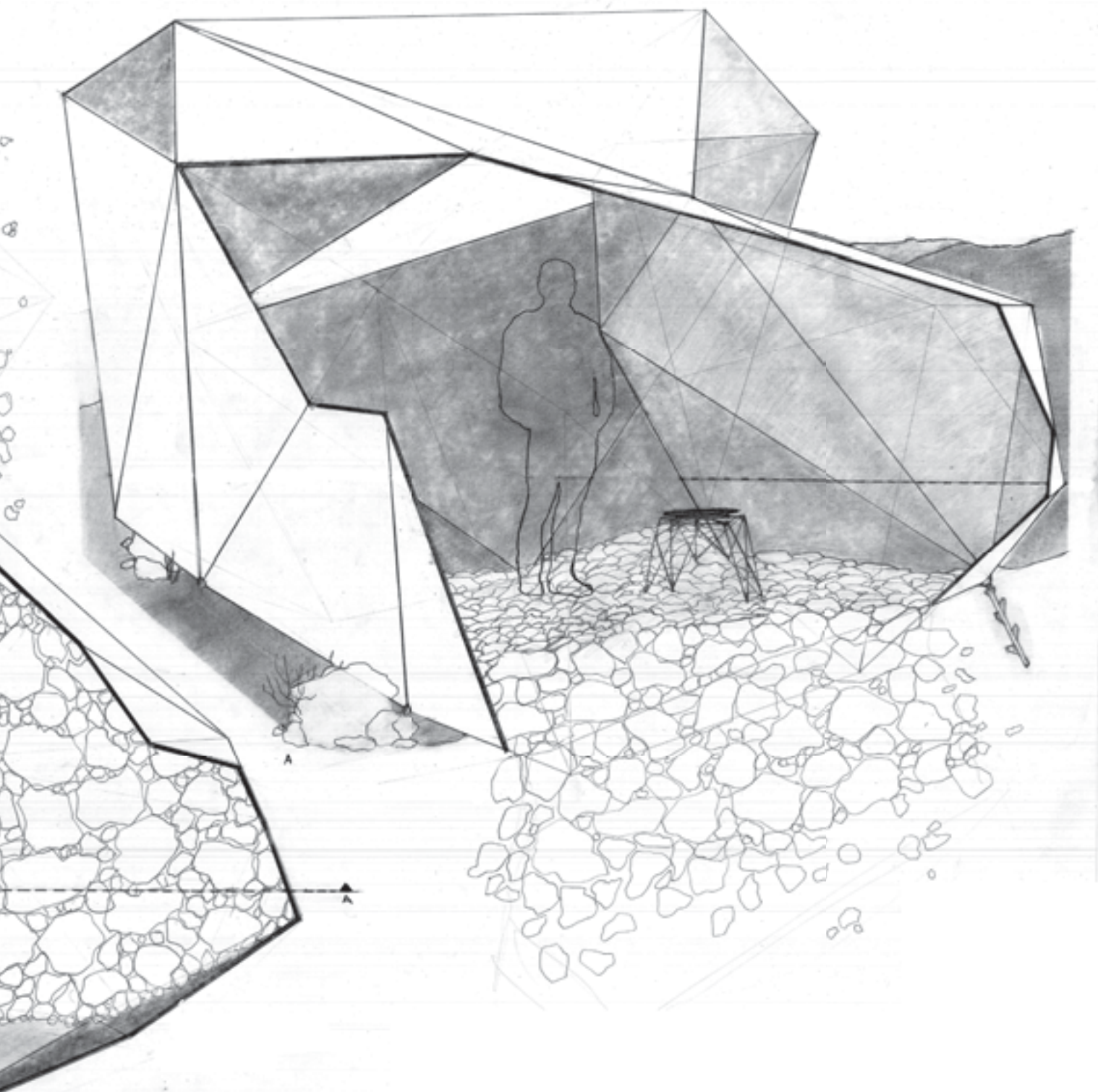


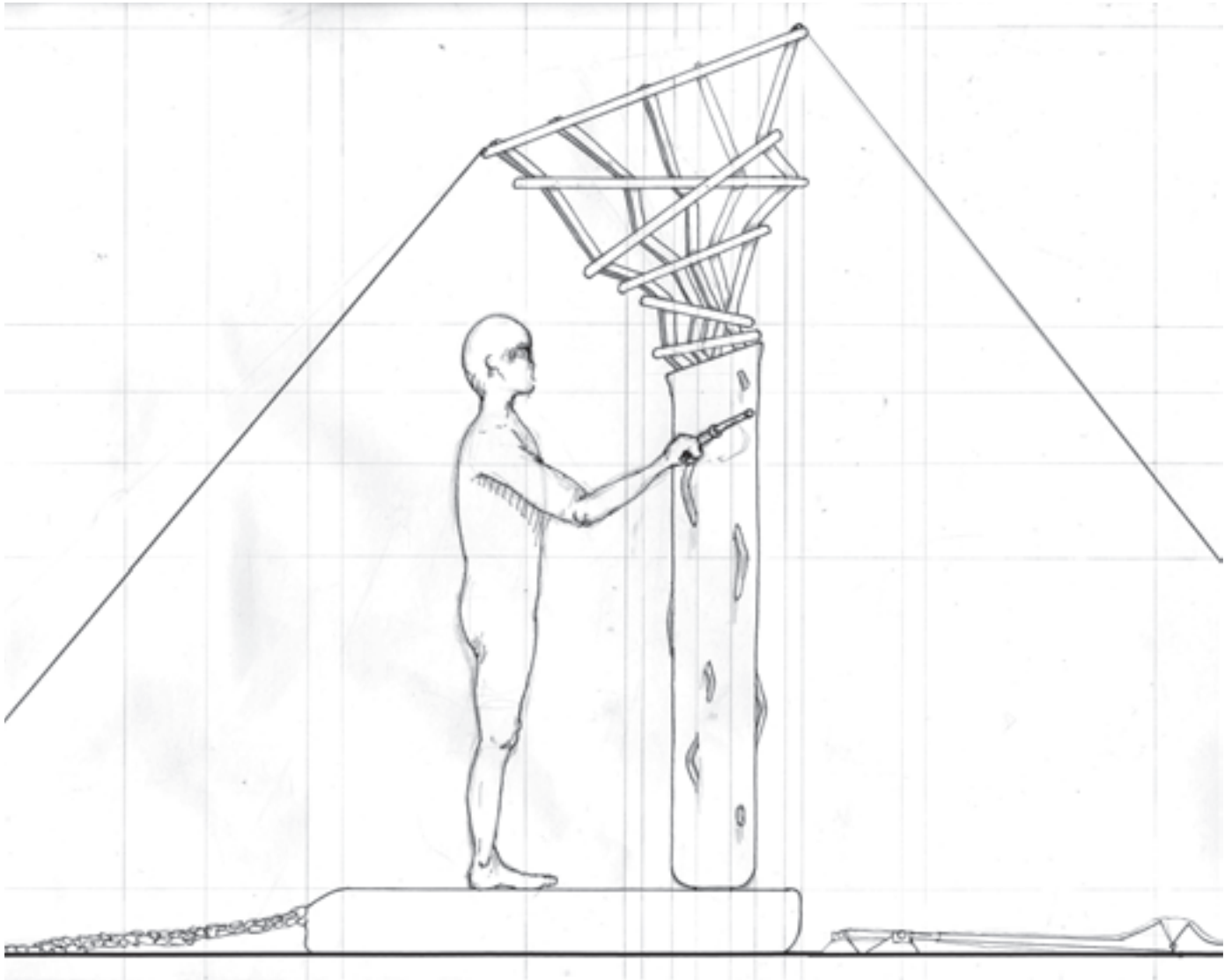












### public vs private

a public toilet is a space that belongs to everyone, yet when you enter, the bathroom you temporarily claim this public space as your own private space. this concept of this public toilet is to make you very aware that you are claiming a space, by making the user an active part of this.

the user must physically build up the space around them in order to use it, while at the same time having the freedom to personalize this space to their preference of privacy vs. view. completely exposed/pulled up entirely and censored / semi-exposed, can see out but bottom half is private.

### individual vs community

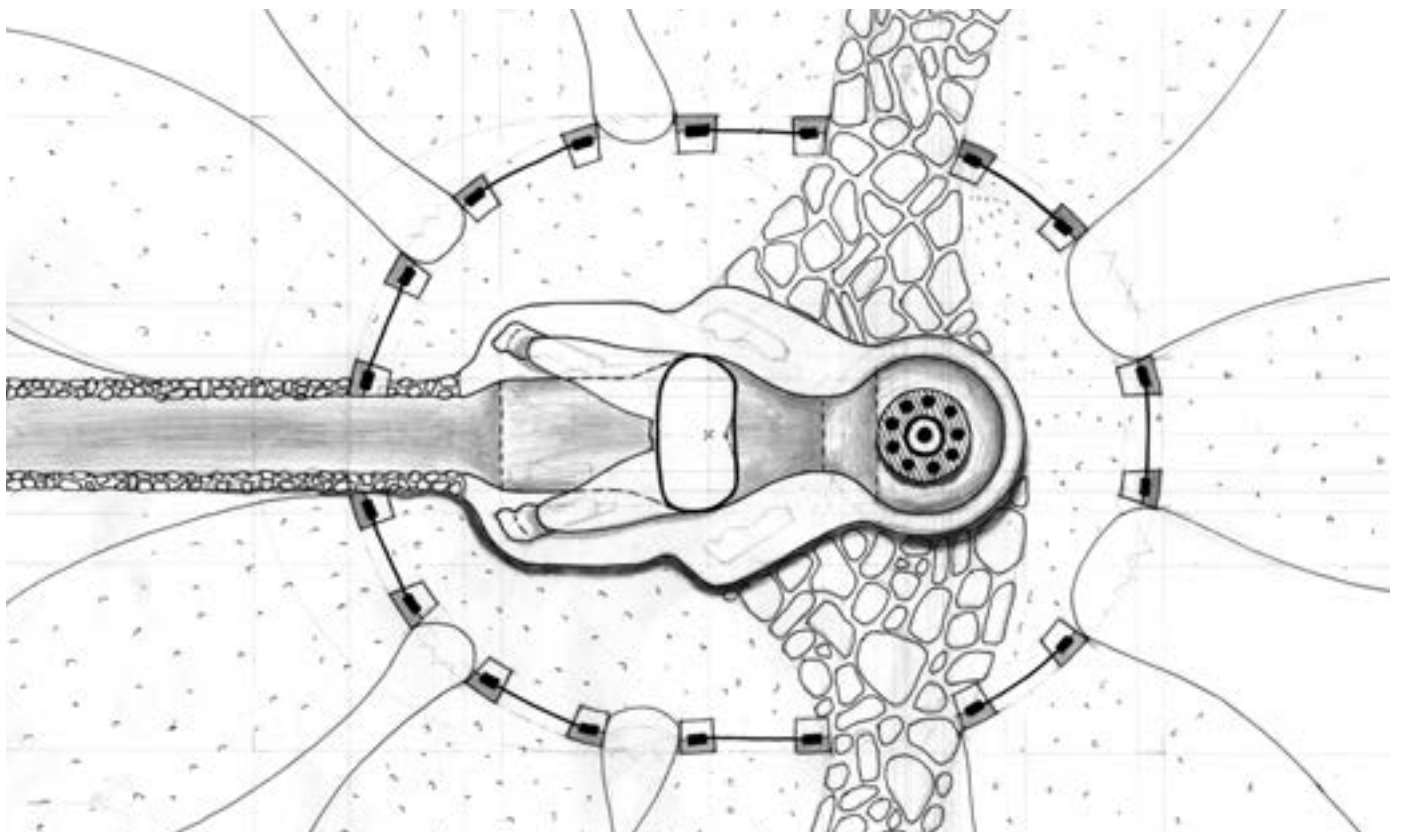
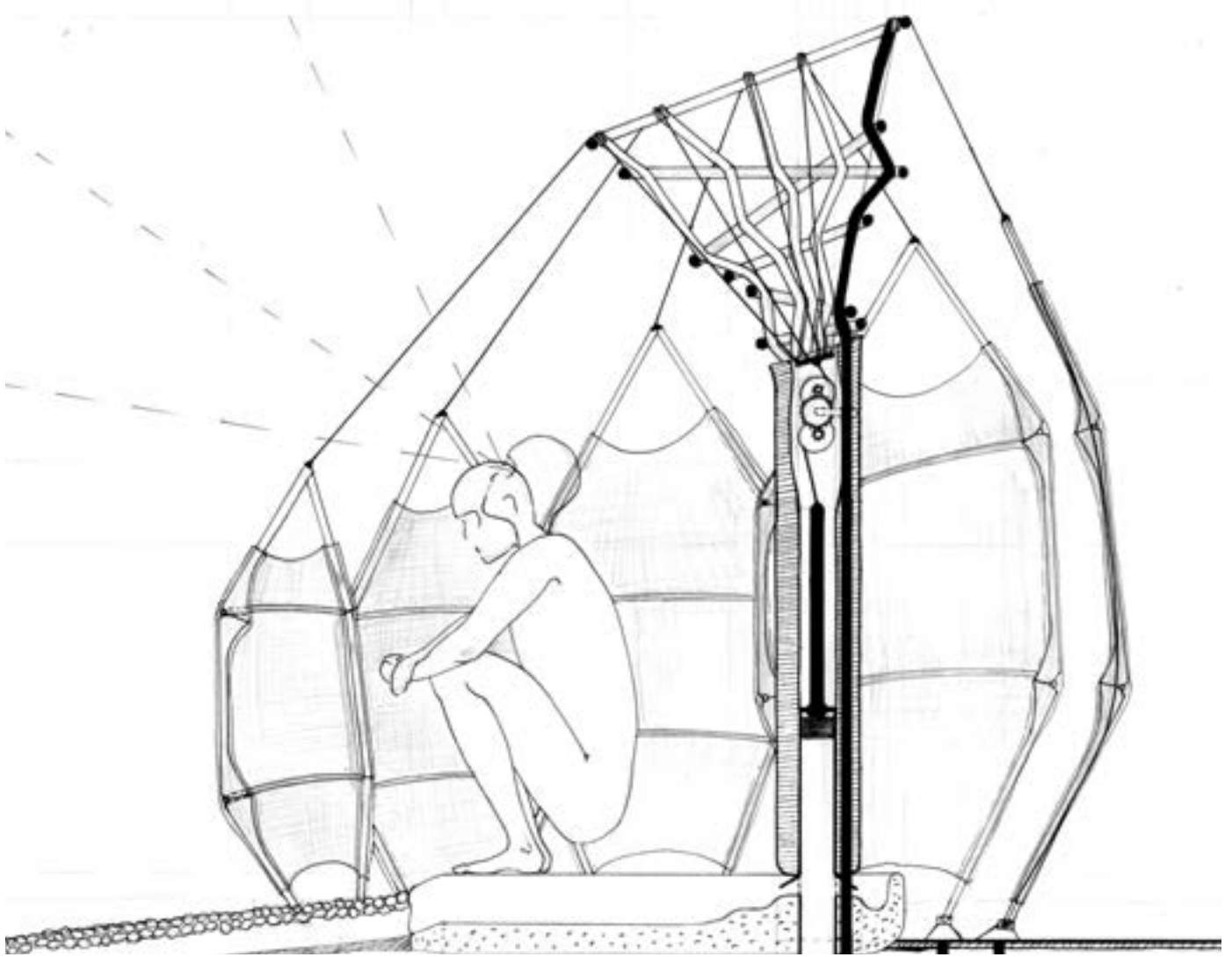
»the irony of defecation is that it is a solitary business yet its repercussions are plural and public.«

the act of using a toilet feels personal and public but it has a significant impact on society and the environment.

the concept is to make the user abundantly clear of where the resources come from and where the waste goes, by exposing and deconstructing the toilet.







overlook  
integrated studio & tech project  
q4 s2 y1 2017 oct/nov

### team

daniela gonzález  
jan schabert  
alta steenkamp  
jan-dirk van der walt

kwiYunivesithi yaseKapa  
university of cape town



faculty of ebe  
school of apg  
2017 bas I architecture

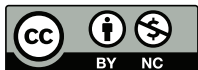


design + theory studio I  
apg1020w  
technology I  
apg1003w

gis leon coetzee  
h&s john coetzee  
h&s/av niven stanley  
repro terence swarts  
admin janine meyer  
tania jansen  
thanks tomà berlanda

typefaces:  
helvetica neue (10/8pt) light, bold  
m.miedinger & e.hoffmann ch/1957  
d.stempel ag for linotype d/1983

p.1/32 photo: © google earth



### auteur/contact

jan schabert, senior lecturer  
schabert@architektur.usw.de



printed in germany @ laser-line  
paper recycling offset fsc160 gm<sup>-2</sup>  
copies 30

### abafundi / students

adee govender	lauren armitage
alex dill	lauren klingenber
alex maggs	leila petersen
alka jiven	louis maarsingh
amber williams	luana manhica
ash riemers	mario lottering
ashley howard	maxine seethal
bee maas	maya sarembok
bee xiphu	micha stiller
ben defty	monique teixeira
busi langalibalele	mubeena azziz
caitlin cairns	munashe mombo
caleb bell	mxolisi moyo
carol khaas	naa-ilah brown
chamonix roets	nchima kamwendo
charlotte mbatha	ndu langa
chinenye chukwuka	nicholas basson
christine hu	nicky duncan
clem golding	palesa molopyane
collet mahlangu	phumzile konile
daks dhliwayo	poloko leteka
dillon young	raph calo
divine ilunga	robyn brinkmann
dylan tejada	robyn franke
em strydom	roxi francke
gabi topat	sarah peto
gemma dobrin	sbu bhembe
hermien relling	scott fortune
humaira wahid	shafee monaff
id davids	shanny ramsamy
isaac mmari	sharon ho
james alcock	simon abrahams
jesse box	simon muller
jeth koen	sofia briel
ji yang	soso makwetu
julia masureik	tammy mostert
kat van wyngaarden	teegan isola
kate thomas	thom shand
kawthar gierdien	tiheli tiheli
kayleigh jonkers	tilanie oettle
kirsty pettit	tosh ramsurn
lam hassim	toto kingsley-rizzo
latoya mbetshu	vuyo bokoda
	ziyaad waggie

